

# BORG4 Antibody

Rabbit Polyclonal

Antigen Affinity Purified

Protein ID NP\_036253.2

Catalog No. A302-380A-T

GeneID 23580

Lot No. A302-380A-T-1

<b>APPLICATIONS</b>	IP, IHC
<b>SPECIES REACTIVITY</b>	Human
<b>AMOUNT</b>	10 µl
<b>CONCENTRATION</b>	1000 µg/ml
<b>STORAGE/SHELF LIFE</b>	2 – 8°C / 1 year from date of receipt
<b>PHYSICAL STATE</b>	Liquid
<b>BUFFER</b>	Tris-citrate/phosphate buffer, pH 7 to 8 containing 0.09% Sodium Azide
<b>ISOTYPE</b>	IgG
<b>ORIGIN</b>	USA
<b>PRODUCTION PROCEDURES</b>	Antibody was affinity purified using an epitope specific to BORG4 immobilized on solid support.

The epitope recognized by A302-380A-T maps to a region between residue 250 and 300 of human binder of Rho GTPases 4 using the numbering given in entry NP\_036253.2 (GeneID 23580).

Immunoglobulin concentration was determined by extinction coefficient: absorbance at 280 nm of 1.4 equals 1.0 mg of IgG.

**APPLICATIONS** Centrifuge tube to remove product from lid. Optimal working dilutions should be determined experimentally by the investigator. Prepare working dilution immediately before use.

Western Blot Not recommended. A302-380A has not performed satisfactorily when used for WB of BORG4 in crude preparations (e.g. whole cell lysate). This antibody can be used for WB of enriched (e.g. immunoprecipitated) sources of BORG4.

Immunoprecipitation 5 – 10 µg/mg lysate

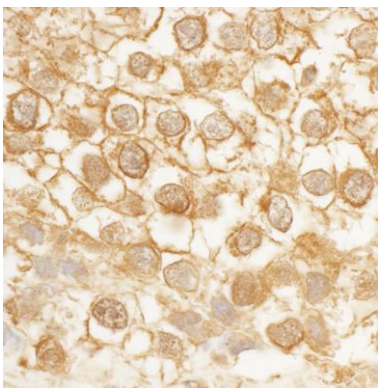
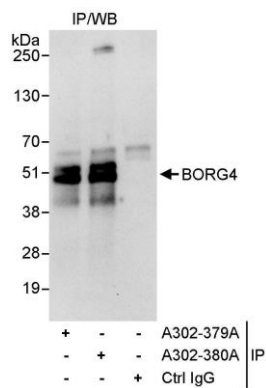
Immunohistochemistry 1:500 – 1:2,000. Epitope retrieval with citrate buffer pH 6.0 is recommended for FFPE tissue sections.

**ADDITIONAL INFO** <https://www.bethyl.com/product/A302-380A-T>

Use the link above to view SDS, a current list of citations, and other product specific information.

IP-western blot protocol: [https://www.bethyl.com/content/protocol\\_IP\\_WB](https://www.bethyl.com/content/protocol_IP_WB)

This document certifies that this product has met all of the quality control standards defined by Bethyl Laboratories, Inc.  
Michael Spencer, PhD Date: June 6, 2022



**Detection of human BORG4 by western blot of immunoprecipitates.** *Samples:* Whole cell lysate (1 mg for IP, 20% of IP loaded) from HeLa cells. *Antibodies:* Affinity purified rabbit anti-BORG4 antibody A302-380A used for IP at 10 µg/mg lysate. BORG4 was also immunoprecipitated by rabbit anti-BORG4 antibody A302-379A, which recognizes an upstream epitope. For blotting immunoprecipitated BORG4, A302-380A was used at 1 µg/ml. *Detection:* Chemiluminescence with an exposure time of 30 seconds.

**Detection of human BORG4 by immunohistochemistry.** *Sample:* FFPE section of human testicular seminoma. *Antibody:* Affinity purified rabbit anti-BORG4 (Cat. No. A302-380A Lot1) used at a dilution of 1:1,000 (1 µg/ml). *Detection:* DAB