

# BORG4 Antibody

Rabbit Polyclonal

Antigen Affinity Purified

Protein ID NP\_036253.2

Catalog No. A302-380A

GeneID 23580

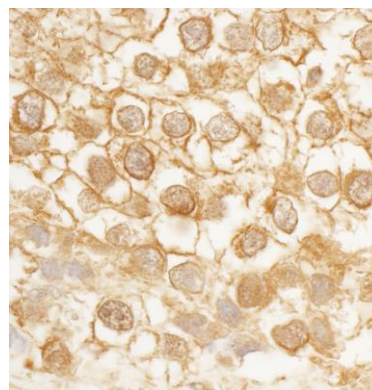
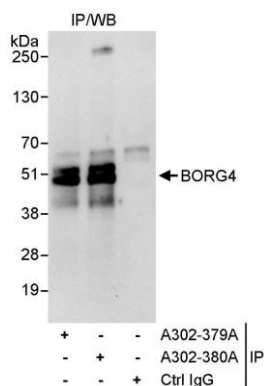
Lot No. A302-380A-1



<b>APPLICATIONS</b>	IP, IHC						
<b>SPECIES REACTIVITY</b>	Human						
<b>AMOUNT</b>	100 µl						
<b>CONCENTRATION</b>	1000 µg/ml						
<b>STORAGE/SHELF LIFE</b>	2 – 8° C / 1 year from date of receipt						
<b>PHYSICAL STATE</b>	Liquid						
<b>BUFFER</b>	Tris-citrate/phosphate buffer, pH 7 to 8 containing 0.09% Sodium Azide						
<b>ISOTYPE</b>	IgG						
<b>ORIGIN</b>	USA						
<b>PRODUCTION PROCEDURES</b>	<p>Antibody was affinity purified using an epitope specific to BORG4 immobilized on solid support.</p> <p>The epitope recognized by A302-380A maps to a region between residue 250 and 300 of human binder of Rho GTPases 4 using the numbering given in entry NP_036253.2 (GeneID 23580).</p> <p>Antibody concentration was determined by extinction coefficient: absorbance at 280 nm of 1.4 equals 1.0 mg of IgG.</p>						
<b>APPLICATIONS</b>	<p>Centrifuge tube to remove product from lid. Optimal working dilutions should be determined experimentally by the investigator. Prepare working dilution immediately before use.</p> <table><tr><td>Western Blot</td><td>Not recommended. A302-380A has not performed satisfactorily when used for WB of BORG4 in crude preparations (e.g. whole cell lysate). This antibody can be used for WB of enriched (e.g. immunoprecipitated) sources of BORG4.</td></tr><tr><td>Immunoprecipitation</td><td>5 – 10 µg/mg lysate</td></tr><tr><td>Immunohistochemistry</td><td>1:500 – 1:2,000. Epitope retrieval with citrate buffer pH 6.0 is recommended for FFPE tissue sections.</td></tr></table>	Western Blot	Not recommended. A302-380A has not performed satisfactorily when used for WB of BORG4 in crude preparations (e.g. whole cell lysate). This antibody can be used for WB of enriched (e.g. immunoprecipitated) sources of BORG4.	Immunoprecipitation	5 – 10 µg/mg lysate	Immunohistochemistry	1:500 – 1:2,000. Epitope retrieval with citrate buffer pH 6.0 is recommended for FFPE tissue sections.
Western Blot	Not recommended. A302-380A has not performed satisfactorily when used for WB of BORG4 in crude preparations (e.g. whole cell lysate). This antibody can be used for WB of enriched (e.g. immunoprecipitated) sources of BORG4.						
Immunoprecipitation	5 – 10 µg/mg lysate						
Immunohistochemistry	1:500 – 1:2,000. Epitope retrieval with citrate buffer pH 6.0 is recommended for FFPE tissue sections.						
<b>APPLICATION NOTES</b>	Western blot of immunoprecipitates performed using Normal Pig Serum (Cat. No. S100-020), Goat anti-Rabbit Light Chain HRP Conjugate (Cat. No. A120-113P) and 4-20% SDS-PAGE (link to IP-western blot protocol in Additional Info section below).						
<b>IHC HUMAN CONTROLS</b>	Breast Carcinoma, Testicular Seminoma						
<b>ADDITIONAL INFO</b>	<p><a href="https://www.bethyl.com/product/A302-380A">https://www.bethyl.com/product/A302-380A</a></p> <p>Use the link above to view SDS, a current list of citations, and other product specific information.</p> <p>IP-western blot protocol: <a href="https://www.bethyl.com/content/protocol_IP_WB">https://www.bethyl.com/content/protocol_IP_WB</a></p>						

This document certifies that this product has met all of the quality control standards defined by Bethyl Laboratories, Inc.  
Eric McIntush, PhD | Chief Scientific Officer

Date: June 21, 2019



**Detection of human BORG4 by western blot of immunoprecipitates.** *Samples:* Whole cell lysate (1 mg for IP, 20% of IP loaded) from HeLa cells. *Antibodies:* Affinity purified rabbit anti-BORG4 antibody A302-380A used for IP at 10 µg/mg lysate. BORG4 was also immunoprecipitated by rabbit anti-BORG4 antibody A302-379A, which recognizes an upstream epitope. For blotting immunoprecipitated BORG4, A302-380A was used at 1 µg/ml. *Detection:* Chemiluminescence with an exposure time of 30 seconds.

**Detection of human BORG4 by immunohistochemistry.** *Sample:* FFPE section of human testicular seminoma. *Antibody:* Affinity purified rabbit anti-BORG4 (Cat. No. A302-380A Lot1) used at a dilution of 1:1,000 (1 µg/ml). *Detection:* DAB