

BORG4 Antibody

Rabbit Polyclonal

Antigen Affinity Purified

Protein ID NP_036253.2

Catalog No. A302-379A-T

GeneID 23580

Lot No. A302-379A-T-1

APPLICATIONS IP

SPECIES REACTIVITY Human

AMOUNT 10 µl

CONCENTRATION 1000 µg/ml

STORAGE/SHELF LIFE 2 – 8°C / 1 year from date of receipt

PHYSICAL STATE Liquid

BUFFER Tris-citrate/phosphate buffer, pH 7 to 8 containing 0.09% Sodium Azide

ISOTYPE IgG

ORIGIN USA

PRODUCTION PROCEDURES Antibody was affinity purified using an epitope specific to BORG4 immobilized on solid support.

The epitope recognized by A302-379A-T maps to a region between residue 100 and 150 of human binder of Rho GTPases 4 using the numbering given in entry NP_036253.2 (GeneID 23580).

Immunoglobulin concentration was determined by extinction coefficient: absorbance at 280 nm of 1.4 equals 1.0 mg of IgG.

APPLICATIONS Centrifuge tube to remove product from lid. Optimal working dilutions should be determined experimentally by the investigator. Prepare working dilution immediately before use.

Western Blot Not recommended

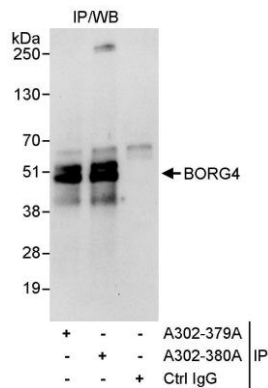
Immunoprecipitation 5 – 10 µg/mg lysate

ADDITIONAL INFO <https://www.bethyl.com/product/A302-379A-T>

Use the link above to view SDS, a current list of citations, and other product specific information.

IP-western blot protocol: https://www.bethyl.com/content/protocol_IP_WB

This document certifies that this product has met all of the quality control standards defined by Bethyl Laboratories, Inc.
Michael Spencer, PhD Date: June 6, 2022



Detection of human BORG4 by western blot of immunoprecipitates. *Samples:* Whole cell lysate (1 mg for IP, 20% of IP loaded) from HeLa cells. *Antibodies:* Affinity purified rabbit anti-BORG4 antibody A302-379A used for IP at 10 µg/mg lysate. BORG4 was also immunoprecipitated by rabbit anti-BORG4 antibody A302-380A, which recognizes a downstream epitope. For blotting immunoprecipitated BORG4, A302-380A was used at 1 µg/ml. *Detection:* Chemiluminescence with an exposure time of 30 seconds.