

Pc2 Antibody

Rabbit Polyclonal

Antigen Affinity Purified	Protein ID	NP_003646.2
Catalog No. A302-355A-T	GeneID	8535
Lot No. A302-355A-T-2		

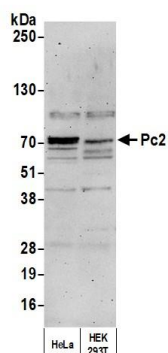
APPLICATIONS	WB, IP, IHC
SPECIES REACTIVITY	Human, Mouse
AMOUNT	10 µl
CONCENTRATION	1000 µg/ml
STORAGE/SHELF LIFE	2 – 8°C / 1 year from date of receipt
PHYSICAL STATE	Liquid
BUFFER	Tris-citrate/phosphate buffer, pH 7 to 8 containing 0.09% Sodium Azide
ISOTYPE	IgG
ORIGIN	USA
PRODUCTION PROCEDURES	Antibody was affinity purified using an epitope specific to Pc2 immobilized on solid support. The epitope recognized by A302-355A-T maps to a region between residue 150 and 200 of human polycomb 2 (chromobox homolog 4) using the numbering given in entry NP_003646.2 (GeneID 8535).

APPLICATIONS Centrifuge tube to remove product from lid. Optimal working dilutions should be determined experimentally by the investigator. Prepare working dilution immediately before use.

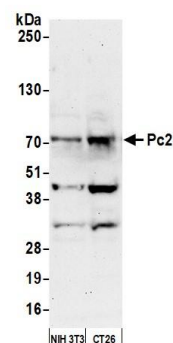
Western Blot	1:2,000 – 1:10,000
Immunoprecipitation	2 – 10 µg/mg lysate
Immunohistochemistry	1:500 to 1:2,000. Epitope retrieval with citrate buffer pH6.0 is recommended for FFPE tissue sections.

ADDITIONAL INFO <https://www.bethyl.com/product/A302-355A-T>
Use the link above to view SDS, a current list of citations, and other product specific information.
IP-western blot protocol: https://www.bethyl.com/content/protocol_IP_WB

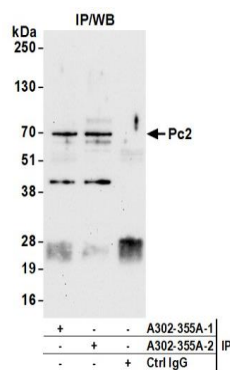
This document certifies that this product has met all of the quality control standards defined by Bethyl Laboratories, Inc.
Michael Spencer, PhD Date: June 6, 2022



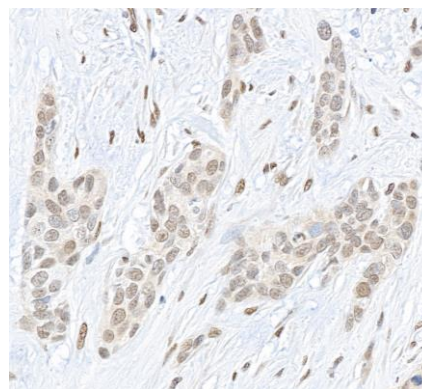
Detection of human Pc2 by western blot. *Samples:* Whole cell lysate (10 µg) from HeLa and HEK293T cells prepared using NETN lysis buffer. *Antibody:* Affinity purified rabbit anti-Pc2 antibody (A302-355A lot 2) used for WB at 0.1 µg/ml. *Detection:* Chemiluminescence with an exposure time of 3 minutes.



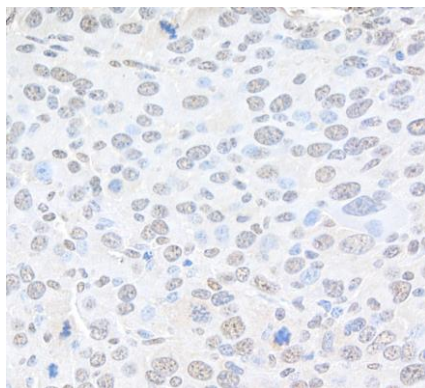
Detection of mouse Pc2 by western blot. *Samples:* Whole cell lysate (50 µg) from NIH 3T3 and CT26 cells prepared using NETN lysis buffer. *Antibody:* Affinity purified rabbit anti-Pc2 antibody (A302-355A lot 2) used for WB at 0.1 µg/ml. *Detection:* Chemiluminescence with an exposure time of 75 seconds.



Detection of human Pc2 by western blot of immunoprecipitates. *Samples:* Whole cell lysate (1.0 mg per IP reaction; 20% of IP loaded) from HeLa cells prepared using NETN lysis buffer. *Antibodies:* Affinity purified rabbit anti-Pc2 antibody (A302-355A lot 2) used for IP at 6 µg per reaction. Pc2 was also immunoprecipitated by a previous lot of this antibody (A302-355A lot 1). For blotting immunoprecipitated Pc2, A302-355A was used at 0.1 µg/ml. *Detection:* Chemiluminescence with an exposure time of 30 seconds.



Detection of human Pc2 by immunohistochemistry. *Sample:* FFPE section of human bladder carcinoma. *Antibody:* Affinity purified rabbit anti-Pc2 (A302-355A Lot 2) used at a dilution of 1:1,000 (1 µg/ml). *Detection:* DAB

**Detection of mouse Pc2 by immunohistochemistry.**

Sample: FFPE section of mouse renal cell carcinoma.

Antibody: Affinity purified rabbit anti- Pc2 (A302-355A Lot 2) used at a dilution of 1:1,000 (1 µg/ml). *Detection:* DAB