

# Phospho RelA (S468) Antibody

Rabbit Polyclonal

Antigen Affinity Purified Protein ID NP\_068810.2

Catalog No. A302-064A-T GeneID 5970

Lot No. A302-064A-T-3

<b>APPLICATIONS</b>	WB, IHC
<b>SPECIES REACTIVITY</b>	Human, Mouse
<b>AMOUNT</b>	10 µl
<b>CONCENTRATION</b>	1000 µg/ml
<b>STORAGE/SHELF LIFE</b>	2 – 8°C / 1 year from date of receipt
<b>PHYSICAL STATE</b>	Liquid
<b>BUFFER</b>	Tris-citrate/phosphate buffer, pH 7 to 8 containing 0.09% Sodium Azide
<b>ISOTYPE</b>	IgG
<b>ORIGIN</b>	USA
<b>PRODUCTION PROCEDURES</b>	Antibody was affinity purified using an epitope specific to Phospho RelA (S468) immobilized on solid support.

The epitope recognized by A302-064A-T maps to a region of human v-rel reticuloendotheliosis viral oncogene homolog A surrounding serine 468 when serine 468 is phosphorylated using the numbering given in entry NP\_068810.2 (GeneID 5970).

**APPLICATIONS** Centrifuge tube to remove product from lid. Optimal working dilutions should be determined experimentally by the investigator. Prepare working dilution immediately before use.

Western Blot 1:2,000 – 1:10,000

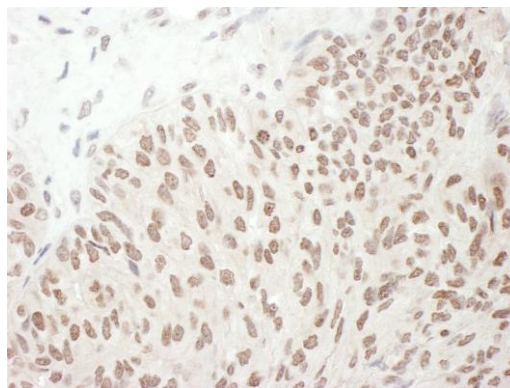
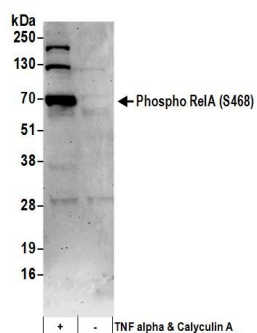
Immunoprecipitation Not recommended

Immunohistochemistry 1:500 – 1:2,000. Epitope retrieval with Tris-EDTA pH 9.0 is recommended for FFPE tissue sections.

**ADDITIONAL INFO** <https://www.bethyl.com/product/A302-064A-T>

Use the link above to view SDS, a current list of citations, and other product specific information.

This document certifies that this product has met all of the quality control standards defined by Bethyl Laboratories, Inc.  
Michael Spencer, PhD Date: June 6, 2022

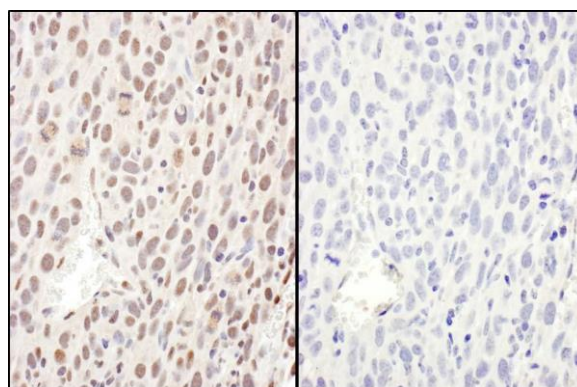
**Detection of human Phospho RelA (S468) by western blot.**

**Samples:** Whole cell lysate (50 µg) from Jurkat cells treated with TNF alpha and Calyculin A (+) or mock treated (-).

**Antibodies:** Affinity purified rabbit anti-Phospho RelA (S468) antibody A302-064A (lot A302-064A-3) used for WB at 0.1 µg/ml. **Detection:** Chemiluminescence with an exposure time of 10 seconds.

**Detection of human Phospho RelA (S468) by immunohistochemistry.**

**Sample:** FFPE section of human ovarian carcinoma. **Antibody:** Affinity purified rabbit anti-Phospho RelA (S468) (Cat. No. A302-064A Lot3) used at a dilution of 1:1,000 (1 µg/ml). **Detection:** DAB. **Counterstain:** IHC Hematoxylin (blue).

**Detection of mouse Phospho RelA (S468) by immunohistochemistry.**

**Samples:** FFPE sections of mouse renal cell carcinoma. Mock phosphatase treated section (left) and calf intestinal phosphatase-treated section (right). **Antibody:** Affinity purified rabbit anti-Phospho RelA (S468) (Cat. No. A302-064A Lot2) used at a dilution of 1:1,000 (1 µg/ml). **Detection:** DAB