

Phospho RelA (S536) Antibody

Rabbit Polyclonal

Antigen Affinity Purified

Protein ID NP_068810.2

Catalog No. A302-062A-T

GeneID 5970

Lot No. A302-062A-T-12

APPLICATIONS	WB, IHC
SPECIES REACTIVITY	Human
PRESUMED REACTIVITY	Based on 100% sequence identity, this antibody is predicted to react with Mouse
AMOUNT	10 µl
CONCENTRATION	200 µg/ml
STORAGE/SHELF LIFE	2 – 8°C / 1 year from date of receipt
PHYSICAL STATE	Liquid
BUFFER	Tris-buffered Saline containing 0.1% BSA and 0.09% Sodium Azide
ISOTYPE	IgG
ORIGIN	USA
PRODUCTION PROCEDURES	Antibody was affinity purified using an epitope specific to Phospho RelA (S536) immobilized on solid support.

The epitope recognized by A302-062A-T maps to a region of human v-rel reticuloendotheliosis viral oncogene homolog A surrounding serine 536 when serine 536 is phosphorylated using the numbering given in entry NP_068810.2 (GeneID 5970).

APPLICATIONS Centrifuge tube to remove product from lid. Optimal working dilutions should be determined experimentally by the investigator. Prepare working dilution immediately before use.

Western Blot 1:2,000 – 1:10,000

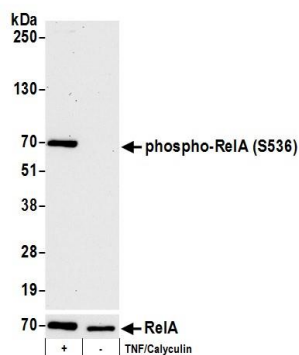
Immunoprecipitation Not recommended

Immunohistochemistry 1:200 to 1:1000. Epitope retrieval with Tris-EDTA pH9.0 is recommended for FFPE tissue sections.

ADDITIONAL INFO <https://www.fortislife.com/p/A302-062A-T>

Use the link above to view SDS, a current list of citations, and other product specific information.

This document certifies that this product has met all of the quality control standards defined by Bethyl Laboratories, Inc.
Michael Spencer, PhD Date: August 8, 2022

**Detection of human phospho RelA-S536 by western blot.**

Samples: Whole cell lysate (15 µg) from Jurkat cells treated with TNF alpha and Calyculin A (+) or mock treated (-).

Antibodies: Affinity purified rabbit anti-Phospho RelA (S536) antibody A302-062A-T (lot A302-062A-T-12) used for WB at 1:1000. *Detection:* Chemiluminescence with an exposure time of 75 seconds. Lower panel: Western blot for total RelA using rabbit anti-RelA antibody A301-824A at 0.1 µg/ml with exposure time of 30 seconds.