

Phospho RelA (S536) Antibody

Rabbit Polyclonal

Antigen Affinity Purified

Protein ID NP_068810.2

Catalog No. A302-062A

GeneID 5970

Lot No. A302-062A-12



APPLICATIONS	WB, IHC
SPECIES REACTIVITY	Human
PRESUMED REACTIVITY	Based on 100% sequence identity, this antibody is predicted to react with Mouse
AMOUNT	100 µl
CONCENTRATION	200 µg/ml
STORAGE/SHELF LIFE	2 – 8° C / 1 year from date of receipt
PHYSICAL STATE	Liquid
BUFFER	Tris-buffered Saline containing 0.1% BSA and 0.09% Sodium Azide
ISOTYPE	IgG
ORIGIN	USA
PRODUCTION PROCEDURES	Antibody was affinity purified using an epitope specific to Phospho RelA (S536) immobilized on solid support.

The epitope recognized by A302-062A maps to a region of human v-rel reticuloendotheliosis viral oncogene homolog A surrounding serine 536 when serine 536 is phosphorylated using the numbering given in entry NP_068810.2 (GeneID 5970).

Immunoglobulin concentration was determined by extinction coefficient: absorbance at 280 nm of 1.4 equals 1.0 mg of IgG.

APPLICATIONS Centrifuge tube to remove product from lid. Optimal working dilutions should be determined experimentally by the investigator. Prepare working dilution immediately before use.

Western Blot 1:2,000 – 1:10,000

Immunoprecipitation Not recommended

Immunohistochemistry 1:200 to 1:1000. Epitope retrieval with Tris-EDTA pH9.0 is recommended for FFPE tissue sections.

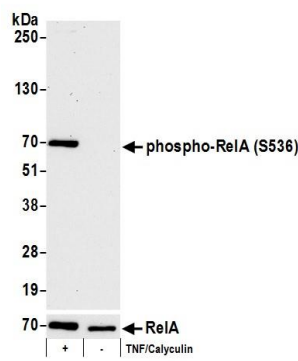
APPLICATION NOTES Western blot of lysates performed using standard western blot reagents and 4–20% SDS-PAGE.

IHC HUMAN CONTROLS Breast Carcinoma, Ovarian Carcinoma

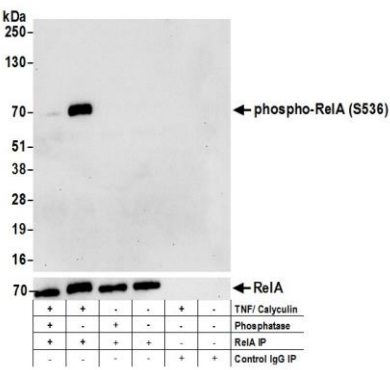
ADDITIONAL INFO <https://www.bethyl.com/product/A302-062A>

Use the link above to view SDS, a current list of citations, and other product specific information.

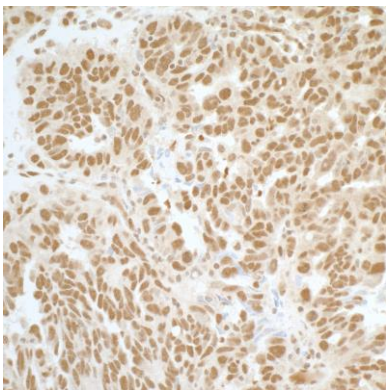
This document certifies that this product has met all of the quality control standards defined by Bethyl Laboratories, Inc.
Eric McIntush, PhD | Chief Scientific Officer Date: October 30, 2019



Detection of human phospho RelA–S536 by western blot.
Samples: Whole cell lysate (15 µg) from Jurkat cells treated with TNF alpha and Calyculin A (+) or mock treated (-).
Antibodies: Affinity purified rabbit anti–Phospho RelA (S536) antibody A302–062A (lot A302–062A–12) used for WB at 0.1 µg/ml. *Detection:* Chemiluminescence with an exposure time of 75 seconds. Lower panel: Western blot for total RelA using rabbit anti–RelA antibody A301–824A at 0.1 µg/ml with exposure time of 30 seconds.



Detection of human phospho RelA–S536 by western blot.
Samples: Whole cell lysate (1 mg for IP, 20% of IP loaded) from Jurkat cells treated with TNF alpha and Calyculin A (+) or mock treated (-), and treated with Phosphatase (+) or mock treated (-). *Antibodies:* Rabbit anti–RelA antibody A301–824A used for IP at 6 µg/mg lysate. Affinity purified rabbit anti–Phospho RelA (S536) antibody A302–062A (lot A302–062A–12) used for WB at 0.1 µg/ml. *Detection:* Chemiluminescence with an exposure time of 10 seconds. Lower panel: Western blot for total RelA using affinity purified rabbit anti–RelA antibody A301–824A at 0.1 µg/ml with exposure time of 10 seconds.



Detection of human Phospho RelA (S536) by immunohistochemistry. *Sample:* FFPE section of human ovarian carcinoma. *Antibody:* Affinity purified rabbit anti–Phospho RelA (S536) (Cat. No. A302–062A lot 12) used at a dilution of 1:200 (1µg/ml). *Detection:* DAB Counterstain: IHC Hematoxylin (blue).

