

BCR Antibody

Rabbit Polyclonal

Antigen Affinity Purified Protein ID NP_004318.3

Catalog No. A302-057A-T GeneID 613

Lot No. A302-057A-T-1

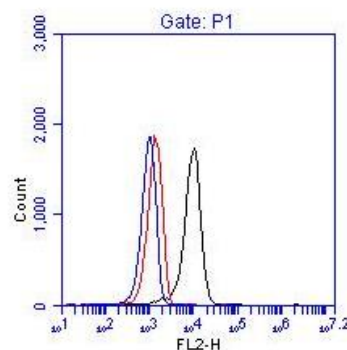
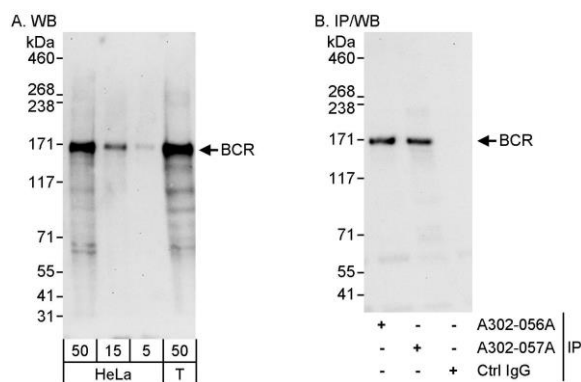
APPLICATIONS	WB, IP, ICC-IF, F
SPECIES REACTIVITY	Human
PRESUMED REACTIVITY	Based on 100% sequence identity, this antibody is predicted to react with Mouse
AMOUNT	10 µl
CONCENTRATION	1000 µg/ml
STORAGE/SHELF LIFE	2 – 8°C / 1 year from date of receipt
PHYSICAL STATE	Liquid
BUFFER	Tris-citrate/phosphate buffer, pH 7 to 8 containing 0.09% Sodium Azide
ISOTYPE	IgG
ORIGIN	USA
PRODUCTION PROCEDURES	Antibody was affinity purified using an epitope specific to BCR immobilized on solid support. The epitope recognized by A302-057A-T maps to a region between residue 1221 and 1271 of human breakpoint cluster region using the numbering given in entry NP_004318.3 (GeneID 613).

APPLICATIONS Centrifuge tube to remove product from lid. Optimal working dilutions should be determined experimentally by the investigator. Prepare working dilution immediately before use.

Western Blot	1:2,000 – 1:10,000
Immunoprecipitation	10 µg/mg lysate
Immunofluorescence (ICC)	1:500 – 1:2,000
Flow Cytometry	0.5 µg per 1 X 10 ⁶ cells in a 150 µl volume

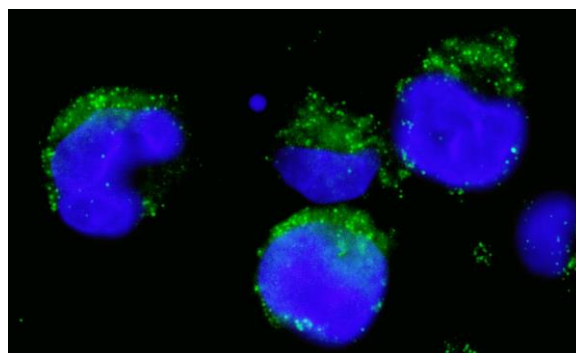
ADDITIONAL INFO <https://www.bethyl.com/product/A302-057A-T>
Use the link above to view SDS, a current list of citations, and other product specific information.
IP-western blot protocol: https://www.bethyl.com/content/protocol_IP_WB

This document certifies that this product has met all of the quality control standards defined by Bethyl Laboratories, Inc.
Michael Spencer, PhD Date: June 6, 2022



Detection of human BCR by western blot and immunoprecipitation. *Samples:* Whole cell lysate from HeLa (5, 15 and 50 µg for WB; 1 mg for IP, 20% of IP loaded) and HEK293T (T; 50 µg) cells. *Antibodies:* Affinity purified rabbit anti-BCR antibody A302-057A used for WB at 0.1 µg/ml (A) and 1 µg/ml (B) and used for IP at 10 µg/mg lysate. BCR was also immunoprecipitated by rabbit anti-BCR antibody A302-056A, which recognizes an upstream epitope. *Detection:* Chemiluminescence with exposure times of 30 seconds (A) and 10 seconds (B).

Detection of BCR. 1×10^6 K-562 cells were fixed, permeabilized, and stained with 0.25 µg anti-BCR A302-057A in a 150 µl reaction. Isotype anti-KLH control (red), no antibody (blue) and anti-BCR A302-057A (black).



Detection of human BCR by immunocytochemistry.

Sample: FFPE section of human K-562 cells (contains the chromosomal translocation, t(9:22) that creates the BCR/ABL fusion gene). *Antibody:* Affinity purified rabbit anti-BCR (Cat. No. A302-057A) used at a dilution of 1:1,000 (1 µg/ml). *Detection:* Green-fluorescent goat anti-rabbit IgG-Alexa Fluor® 488 used at a dilution of 1:1,000.