

BCR Antibody

Rabbit Polyclonal

Antigen Affinity Purified	Protein ID	NP_004318.3
Catalog No. A302-056A-T	GeneID	613
Lot No. A302-056A-T-1		

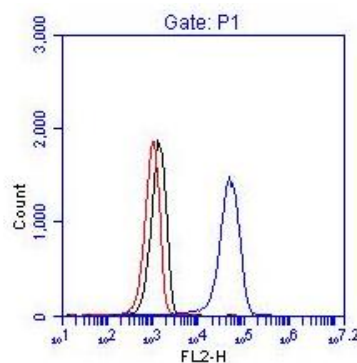
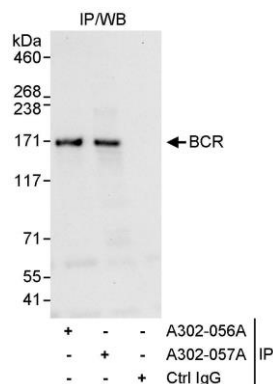
APPLICATIONS	IP, ICC-IF, F
SPECIES REACTIVITY	Human
AMOUNT	10 µl
CONCENTRATION	1000 µg/ml
STORAGE/SHELF LIFE	2 – 8°C / 1 year from date of receipt
PHYSICAL STATE	Liquid
BUFFER	Tris-citrate/phosphate buffer, pH 7 to 8 containing 0.09% Sodium Azide
ISOTYPE	IgG
ORIGIN	USA
PRODUCTION PROCEDURES	Antibody was affinity purified using an epitope specific to BCR immobilized on solid support. The epitope recognized by A302-056A-T maps to a region between residue 50 and 100 of human breakpoint cluster region using the numbering given in entry NP_004318.3 (GeneID 613). Immunoglobulin concentration was determined by extinction coefficient: absorbance at 280 nm of 1.4 equals 1.0 mg of IgG.

APPLICATIONS Centrifuge tube to remove product from lid. Optimal working dilutions should be determined experimentally by the investigator. Prepare working dilution immediately before use.

Western Blot	Not recommended. Use rabbit anti-BCR antibody A302-057A.
Immunoprecipitation	10 µg/mg lysate
Immunofluorescence (ICC)	1:500 – 1:2,000
Flow Cytometry	0.25 µg per 1 X 10 ⁶ cells in a 150 µl volume

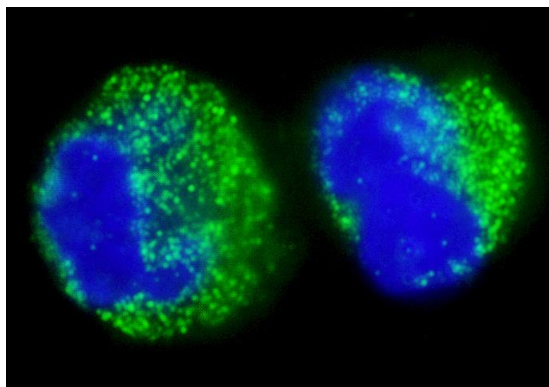
ADDITIONAL INFO <https://www.bethyl.com/product/A302-056A-T>
Use the link above to view SDS, a current list of citations, and other product specific information.
IP-western blot protocol: https://www.bethyl.com/content/protocol_IP_WB

This document certifies that this product has met all of the quality control standards defined by Bethyl Laboratories, Inc.
Michael Spencer, PhD Date: June 6, 2022



Detection of human BCR by western blot of immunoprecipitates. *Samples:* Whole cell lysate (1 mg for IP, 20% of IP loaded) from HeLa cells. *Antibodies:* Affinity purified rabbit anti-BCR antibody A302-056A used for IP at 10 µg/mg lysate. BCR was also immunoprecipitated by rabbit anti-BCR antibody A302-057A, which recognizes a downstream epitope. For blotting immunoprecipitated BCR, A302-057A was used at 1 µg/ml. *Detection:* Chemiluminescence with an exposure time of 10 seconds.

Detection of BCR. 1×10^6 K-562 cells were fixed, permeabilized, and stained with 0.25 µg anti-BCR A302-056A in a 150 µl reaction. Isotype anti-KLH control (black), no antibody (red) and anti-BCR A302-056A (blue).



Detection of human BCR by immunocytochemistry. *Sample:* FFPE section of human K-562 cells (contains the chromosomal translocation, t(9:22) that creates the BCR/ABL fusion gene). *Antibody:* Affinity purified rabbit anti-BCR (Cat. No. A302-056A) used at a dilution of 1:1,000 (1 µg/ml). *Detection:* Green-fluorescent goat anti-rabbit IgG-Alexa Fluor® 488 used at a dilution of 1:1,000.