

BRD4 Antibody

Rabbit Polyclonal

Antigen Affinity Purified	RefSeq ID	NP_490597.1
Catalog No. A301-985A50	Uniprot ID	O60885
Lot No. 9	GeneID	23476

APPLICATIONS	WB, IP, IHC
SPECIES REACTIVITY	Human, Mouse
AMOUNT	50 µl
CONCENTRATION	1000 µg/ml
STORAGE/SHELF LIFE	2 – 8°C / 1 year from date of receipt
PHYSICAL STATE	Liquid
BUFFER	Tris-citrate/phosphate buffer, pH 7 to 8 containing 0.09% Sodium Azide
ISOTYPE	IgG
ORIGIN	USA
PRODUCTION PROCEDURES	Antibody was affinity purified using an epitope specific to BRD4 immobilized on solid support.

The epitope recognized by A301-985A50 maps to a region between residue 1312 and 1362 of human bromodomain-containing protein 4 using the numbering given in entry NP_490597.1 (GeneID 23476).

Immunoglobulin concentration was determined using Beer's Law where 1mg/mL IgG has an A280 of 1.4.

APPLICATIONS	Centrifuge tube to remove product from lid. Optimal working dilutions should be determined experimentally by the investigator. Prepare working dilution immediately before use.
---------------------	---

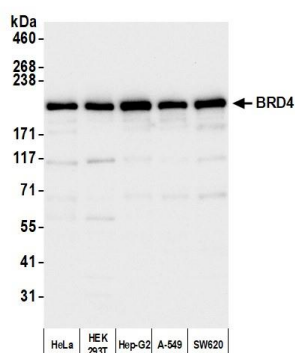
Western Blot	1:10,000 – 1:25,000
Immunoprecipitation	6 µg/mg lysate
Immunohistochemistry	1:1000 – 1:5000. Epitope retrieval with citrate buffer pH 6.0 is recommended for FFPE tissue sections.

IHC HUMAN CONTROLS	Breast Carcinoma, Ovarian Carcinoma
---------------------------	-------------------------------------

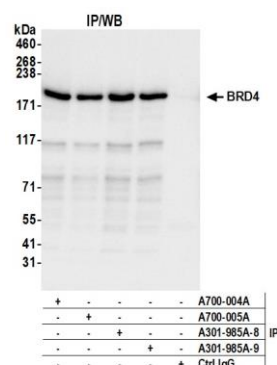
IHC MOUSE CONTROLS	Renal Cell Carcinoma
---------------------------	----------------------

ADDITIONAL INFO	https://www.fortislifesciences.com/p/A301-985A50 Use the link above to view SDS, a current list of citations, and other product specific information.
------------------------	---

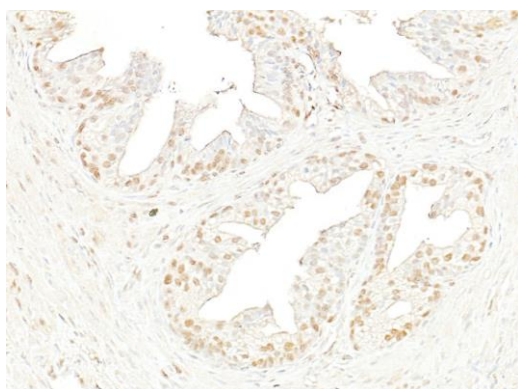
This document certifies that this product has met all of the quality control standards defined by Bethyl Laboratories, Inc.
Michael Spencer, PhD Date: May 14, 2024



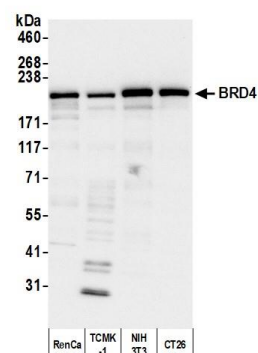
Detection of human BRD4 by western blot. *Samples:* Whole cell lysate (10 µg) from HeLa, HEK293T, Hep-G2, A-549, and SW620 cells prepared using NETN lysis buffer. *Antibody:* Affinity purified rabbit anti-BRD4 antibody (A301-985A50 lot 9) used for WB at 0.04 µg/ml. *Detection:* Chemiluminescence with an exposure time of 10 seconds.



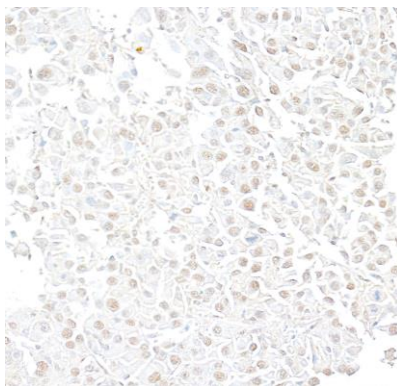
Detection of human BRD4 by western blot of immunoprecipitates. *Samples:* Whole cell lysate (1 mg per IP; 5% of IP loaded) from HeLa cells prepared using NETN lysis buffer. *Antibody:* Affinity purified rabbit anti-BRD4 antibody (A301-985A50 lot 9) used for IP at 6 µg per reaction. BRD4 was also immunoprecipitated by a previous lot of this antibody (A301-985A50 lot 8), a recombinant monoclonal antibody [BL-151-6F11](A700-005) and an antibody against a different epitope of BRD4 [BL-149-2H5](A700-004A). For blotting immunoprecipitated BRD4, A301-985A was used at 0.04 µg/ml. *Detection:* Chemiluminescence with an exposure time of 10 seconds.



Detection of human BRD4 by immunohistochemistry. *Sample:* FFPE section of prostate carcinoma. *Antibody:* Affinity purified rabbit anti-BRD4 antibody (A301-985A50 lot 9). *Secondary:* HRP-conjugated goat anti-rabbit IgG (A120-501P).



Detection of mouse BRD4 by western blot. *Samples:* Whole cell lysate (5 µg) from RenCa, TCMK-1, NIH 3T3, and CT26 cells prepared using NETN lysis buffer. *Antibody:* Affinity purified rabbit anti-BRD4 antibody (A301-985A50 lot 9) used for WB at 0.04 µg/ml. *Detection:* Chemiluminescence with an exposure time of 10 seconds.



Detection of mouse BRD4 by immunohistochemistry.
Sample: FFPE section of mouse renal cell carcinoma.
Antibody: Affinity purified rabbit anti-BRD4 antibody (A301-985A50 lot 9). *Secondary:* HRP-conjugated goat anti-rabbit IgG (A120-501P).