

Phospho Histone H3 (S10) Antibody

Rabbit Polyclonal

Antigen Affinity Purified Protein ID NP_003520.1

Catalog No. A301-844A-T GeneID 8350

Lot No. A301-844A-T-1

APPLICATIONS	WB, IHC, ICC-IF, F
SPECIES REACTIVITY	Human, Mouse
AMOUNT	10 µl
CONCENTRATION	200 µg/ml
STORAGE/SHELF LIFE	2 – 8°C / 1 year from date of receipt
PHYSICAL STATE	Liquid
BUFFER	Tris-buffered Saline containing 0.1% BSA and 0.09% Sodium Azide
ISOTYPE	IgG
ORIGIN	USA
PRODUCTION PROCEDURES	Antibody was affinity purified using an epitope specific to Phospho Histone H3 (Ser10) immobilized on solid support.

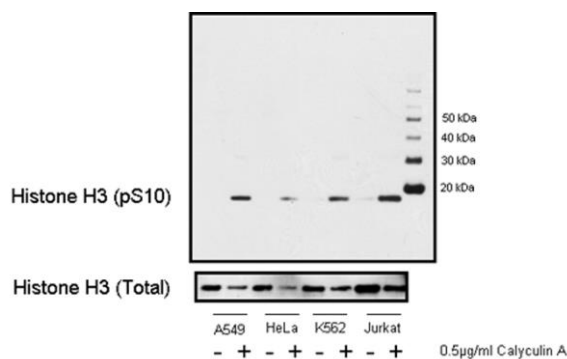
Immunogen for A301-844A-T was a synthetic phosphorylated peptide, which represented a portion of human Histone H3 surrounding serine 10 according to the numbering given in entry NP_003520.1 (GeneID 8350).

APPLICATIONS Centrifuge tube to remove product from lid. Optimal working dilutions should be determined experimentally by the investigator. Prepare working dilution immediately before use.

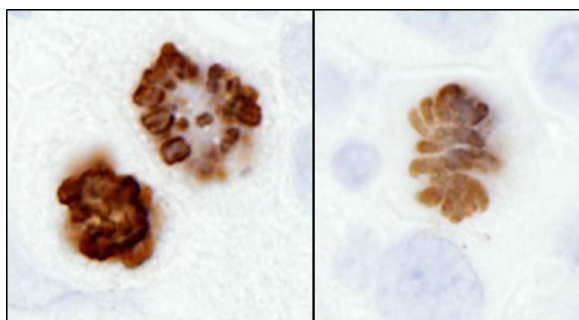
Western Blot	1:5,000 – 1:10,000
Immunohistochemistry	1:2,000 – 1:10,000. Epitope retrieval with citrate buffer pH 6.0 is recommended for FFPE tissue sections.
Immunofluorescence (ICC)	1:2,000 – 1:10,000. Formaldehyde fixation and permeabilization with Triton-X 100 is recommended. Acetone fixation may adversely effect staining.
Flow Cytometry	0.4 µg per 1 X 10 ⁶ cells in a 150 µl volume

ADDITIONAL INFO <https://www.bethyl.com/product/A301-844A-T>
Use the link above to view SDS, a current list of citations, and other product specific information.

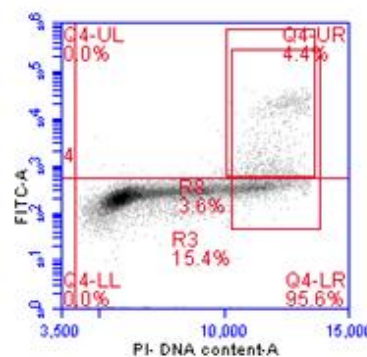
This document certifies that this product has met all of the quality control standards defined by Bethyl Laboratories, Inc.
Michael Spencer, PhD Date: June 6, 2022



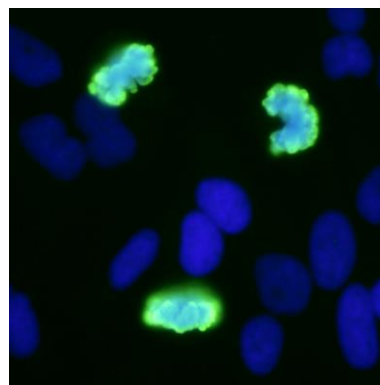
Detection of human Phospho Histone H3 (pS10) by western blot. A-549, HeLa, K-562, and Jurkat cell lines were stimulated with 0.5 µg/ml of Calyculin A at 37°C, 5% CO₂ for 15 minutes. Cells were subsequently lysed and 1 µg of appropriate cell lysates were loaded into respective wells. Western blot was performed using affinity purified rabbit anti-Histone H3 (pS10) antibody A301-844A (20 ng/ml) and affinity purified rabbit anti-Histone H3 antibody (1 µg/ml; Cat. No. A300-822A). Western blots were developed utilizing chemiluminescence with an exposure time of 30 seconds.



Detection of human and mouse Histone H3 (S10) by immunohistochemistry. *Sample:* FFPE section of human colon carcinoma (left) and mouse squamous cell carcinoma (right). *Antibody:* Affinity purified rabbit anti-Phospho Histone H3 (S10) (Cat. No. A301-844A Lot1) used at a dilution of 1:2,500 (0.08 µg/ml). *Detection:* DAB



Detection of Phospho Histone H3 (pS10). Asynchronous Jurkat cells were fixed in 1.5% PFA and permeabilized in 90% methanol. 1 x 10⁶ cells were stained with 0.4 µg anti-phospho Histone H3 (S10) [A301-844A] in a 150 µl reaction.



Detection of human Phospho Histone H3 (S10) by immunocytochemistry. *Samples:* NBF-fixed asynchronous HeLa cells. *Antibody:* Affinity purified rabbit anti-Phospho Histone H3 (S10) (Cat. No. A301-844A Lot1) used at a dilution of 1:2,500 (0.08 µg/ml). *Detection:* Green fluorescent goat antirabbit IgG-FITC conjugated (Cat. No. A120-101F) used at a dilution of 1:100.