

PAM Antibody

Rabbit Polyclonal

Antigen Affinity Purified

Protein ID NP_055872.3

Catalog No. A301-833A-T

GeneID 23077

Lot No. A301-833A-T-1

APPLICATIONS WB

SPECIES REACTIVITY Human

PRESUMED REACTIVITY Based on 100% sequence identity, this antibody is predicted to react with Mouse

AMOUNT 10 µl

CONCENTRATION 200 µg/ml

STORAGE/SHELF LIFE 2 – 8°C / 1 year from date of receipt

PHYSICAL STATE Liquid

BUFFER Tris-buffered Saline containing 0.1% BSA and 0.09% Sodium Azide

ISOTYPE IgG

ORIGIN USA

PRODUCTION PROCEDURES Antibody was affinity purified using an epitope specific to PAM immobilized on solid support.

The epitope recognized by A301-833A-T maps to a region between residue 2425 and 2475 of human protein associated with Myc using the numbering given in entry NP_055872.3 (GeneID 23077).

APPLICATIONS Centrifuge tube to remove product from lid. Optimal working dilutions should be determined experimentally by the investigator. Prepare working dilution immediately before use.

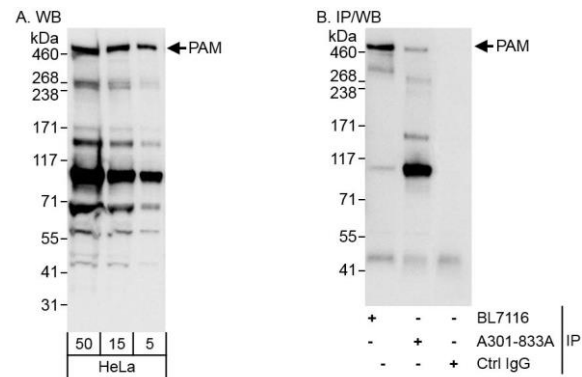
Western Blot 1:2,000 – 1:10,000

Immunoprecipitation Not recommended.

ADDITIONAL INFO <https://www.bethyl.com/product/A301-833A-T>

Use the link above to view SDS, a current list of citations, and other product specific information.

This document certifies that this product has met all of the quality control standards defined by Bethyl Laboratories, Inc.
Michael Spencer, PhD Date: June 6, 2022



Detection of human PAM by western blot and immunoprecipitation. *Samples:* Whole cell lysate (50 µg for WB; 1 mg for IP, 20% of IP loaded) from HeLa cells. *Antibodies:* Affinity purified rabbit anti-PAM antibody A301-833A used for WB at 0.04 µg/ml (A) and 1 µg/ml (B) and used for IP at 3 µg/mg lysate. PAM was also immunoprecipitated by rabbit anti-PAM antibody BL7116, which recognizes an upstream epitope. *Detection:* Chemiluminescence with exposure times of 3 seconds (A) and 1 second (B).