

# IKK-beta Antibody

Rabbit Polyclonal

Antigen Affinity Purified

Protein ID NP\_001547.1

Catalog No. A301-827A-T

GeneID 3551

Lot No. A301-827A-T-1

**APPLICATIONS** WB, IP

**SPECIES REACTIVITY** Human

**AMOUNT** 10 µl

**CONCENTRATION** 200 µg/ml

**STORAGE/SHELF LIFE** 2 – 8°C / 1 year from date of receipt

**PHYSICAL STATE** Liquid

**BUFFER** Tris-buffered Saline containing 0.1% BSA and 0.09% Sodium Azide

**ISOTYPE** IgG

**ORIGIN** USA

**PRODUCTION PROCEDURES** Antibody was affinity purified using an epitope specific to IKK-beta immobilized on solid support.

The epitope recognized by A301-827A-T maps to a region between residue 706 and 756 of human inhibitor of kappa light polypeptide gene enhancer in B-cells, kinase beta using the numbering given in entry NP\_001547.1 (GeneID 3551).

**APPLICATIONS** Centrifuge tube to remove product from lid. Optimal working dilutions should be determined experimentally by the investigator. Prepare working dilution immediately before use.

Western Blot 1:2,000 – 1:10,000

Immunoprecipitation 2 – 5 µg/mg lysate

**ADDITIONAL INFO** <https://www.bethyl.com/product/A301-827A-T>

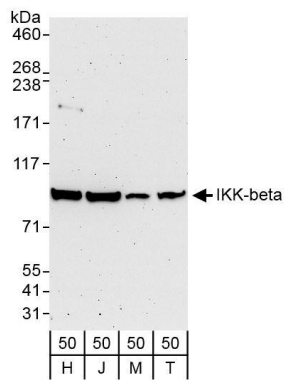
Use the link above to view SDS, a current list of citations, and other product specific information.

IP-western blot protocol: [https://www.bethyl.com/content/protocol\\_IP\\_WB](https://www.bethyl.com/content/protocol_IP_WB)

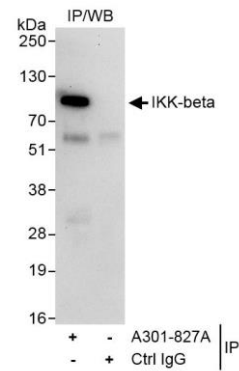
This document certifies that this product has met all of the quality control standards defined by Bethyl Laboratories, Inc.

Michael Spencer, PhD

Date: June 6, 2022



**Detection of human IKK-beta by western blot.** *Samples:* Whole cell lysate from HeLa (H; 50 µg), Jurkat (J; 50 µg), MCF-7 (M; 50 µg), and HEK293T (T; 50 µg) cells. *Antibodies:* Affinity purified rabbit anti-IKK-beta antibody A301-827A (lot A301-827A-1) used for WB at 0.04 µg/ml. *Detection:* Chemiluminescence with exposure times of 3 minute.



**Detection of human IKK-beta by western blot of immunoprecipitates.** *Samples:* Whole cell lysate (1 mg for IP, 20% of IP loaded) from Jurkat cells. *Antibodies:* Affinity purified rabbit anti-IKK-beta antibody A301-827A (lot A301-827A-1) used for IP at 3 µg/mg lysate. For blotting immunoprecipitated IKK-beta, A301-827A was used at 1.0 µg/ml. *Detection:* Chemiluminescence with exposure time of 30 seconds.