

c-Rel Antibody

Rabbit Polyclonal

Antigen Affinity Purified Protein ID NP_002899.1

Catalog No. A301-826A-T GenelD 5966

Lot No. A301-826A-T-1

APPLICATIONS	WB, IP
SPECIES REACTIVITY	Human
AMOUNT	10 µl
CONCENTRATION	1000 µg/ml
STORAGE/SHELF LIFE	2 – 8°C / 1 year from date of receipt
PHYSICAL STATE	Liquid
BUFFER	Tris-citrate/phosphate buffer, pH 7 to 8 containing 0.09% Sodium Azide
ISOTYPE	IgG
ORIGIN	USA
PRODUCTION PROCEDURES	Antibody was affinity purified using an epitope specific to c-Rel immobilized on solid support.

The epitope recognized by A301-826A-T maps to a region between residue 569 and 619 of human reticuloendotheliosis viral oncogene homolog using the numbering given in entry NP_002899.1 (GenelD 5966).

APPLICATIONS Centrifuge tube to remove product from lid. Optimal working dilutions should be determined experimentally by the investigator. Prepare working dilution immediately before use.

Western Blot 1:2,000 – 1:10,000

Immunoprecipitation 2 – 5 µg/mg lysate

ADDITIONAL INFO <https://www.bethyl.com/product/A301-826A-T>

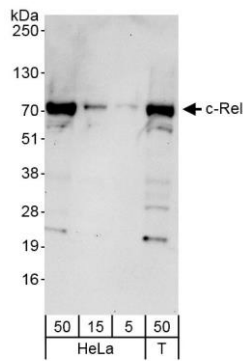
Use the link above to view SDS, a current list of citations, and other product specific information.

IP-western blot protocol: https://www.bethyl.com/content/protocol_IP_WB

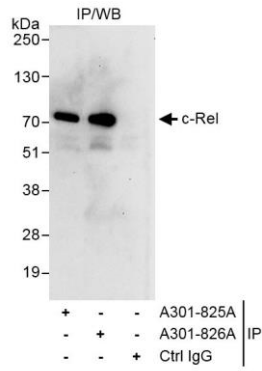
This document certifies that this product has met all of the quality control standards defined by Bethyl Laboratories, Inc.

Michael Spencer, PhD

Date: June 6, 2022



Detection of human c-Rel by western blot. *Samples:* Whole cell lysate from HeLa (50, 15, 5 µg) and HEK293T (T; 50 µg) cells. *Antibodies:* Affinity purified rabbit anti-c-Rel antibody A301-826A (lot A301-826A-1) used for WB at 0.4 µg/ml. *Detection:* Chemiluminescence with exposure time of 30 seconds.



Detection of human c-Rel by western blot of immunoprecipitates. *Samples:* Whole cell lysate (1 mg for IP, 20% of IP loaded) from HeLa cells. *Antibodies:* Affinity purified rabbit anti-c-Rel antibody A301-826A (lot A301-826A-1) used for IP at 3 µg/mg lysate. c-Rel was also immunoprecipitated by rabbit anti-c-Rel antibody A301-825A, which recognizes an upstream epitope. For blotting immunoprecipitated c-Rel, A301-826A was used at 1.0 µg/ml. *Detection:* Chemiluminescence with exposure time of 30 seconds.