

CDK2 Antibody

Rabbit Polyclonal

Antigen Affinity Purified

Protein ID NP_001789.2

Catalog No. A301-812A-T

GeneID 1017

Lot No. A301-812A-T-1

APPLICATIONS WB, IP, IHC

SPECIES REACTIVITY Human, Mouse

PRESUMED REACTIVITY Based on 100% sequence identity, this antibody is predicted to react with Rat, Bovine and Golden hamster

AMOUNT 10 µl

CONCENTRATION 1000 µg/ml

STORAGE/SHELF LIFE 2 – 8°C / 1 year from date of receipt

PHYSICAL STATE Liquid

BUFFER Tris-citrate/phosphate buffer, pH 7 to 8 containing 0.09% Sodium Azide

ISOTYPE IgG

ORIGIN USA

PRODUCTION PROCEDURES Antibody was affinity purified using an epitope specific to CDK2 immobilized on solid support.

The epitope recognized by A301-812A-T maps to a region between residue 248 and 298 of human cyclin-dependent kinase 2 using the numbering given in entry NP_001789.2 (GeneID 1017).

APPLICATIONS Centrifuge tube to remove product from lid. Optimal working dilutions should be determined experimentally by the investigator. Prepare working dilution immediately before use.

Western Blot 1:2,000 – 1:10,000

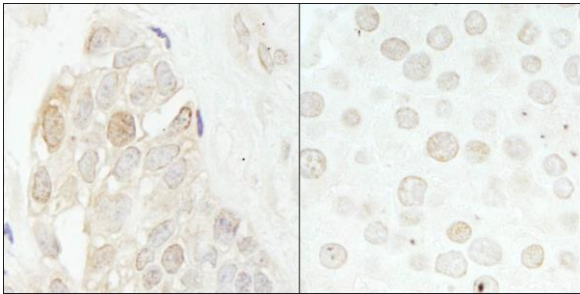
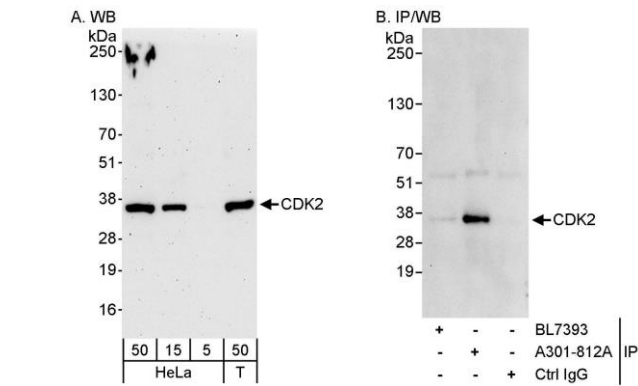
Immunoprecipitation 2 – 5 µg/mg lysate

Immunohistochemistry 1:500 – 1:2,000. Epitope retrieval with Tris-EDTA pH 9.0 is recommended for FFPE tissue sections.

ADDITIONAL INFO <https://www.bethyl.com/product/A301-812A-T>

Use the link above to view SDS, a current list of citations, and other product specific information.
IP-western blot protocol: https://www.bethyl.com/content/protocol_IP_WB

This document certifies that this product has met all of the quality control standards defined by Bethyl Laboratories, Inc.
Michael Spencer, PhD Date: June 6, 2022



Detection of human CDK2 by western blot and immunoprecipitation. *Samples:* Whole cell lysate from HeLa (5, 15 and 50 µg for WB; 1 mg for IP, 20% of IP loaded) and HEK293T (T; 50 µg) cells. *Antibody:* Affinity purified rabbit anti-CDK2 antibody A301-812A used for WB at 0.1 µg/ml (A) and 1 µg/ml (B) and used for IP at 3 µg/mg lysate. CDK2 was also immunoprecipitated, albeit less efficiently, by rabbit anti-CDK2 antibody BL7393, which recognizes an upstream epitope. *Detection:* Chemiluminescence with exposure times of 3 minutes (A) and 30 seconds (B).

Detection of human and mouse CDK2 by immunohistochemistry. *Sample:* FFPE section of human breast carcinoma (left) and mouse renal cell carcinoma (right). *Antibody:* Affinity purified rabbit anti-CDK2 (Cat. No. A301-812A) used at a dilution of 1:1,000 (1 µg/ml) and 1:5,000 (0.2 µg/ml). *Detection:* DAB