

NUP153 Antibody

Rabbit Polyclonal

Antigen Affinity Purified	Protein ID	NP_005115.2
Catalog No. A301-788A-T	GeneID	9972
Lot No. A301-788A-T-1		

APPLICATIONS	WB, IP, ICC-IF
SPECIES REACTIVITY	Human
AMOUNT	10 µl
CONCENTRATION	200 µg/ml
STORAGE/SHELF LIFE	2 – 8°C / 1 year from date of receipt
PHYSICAL STATE	Liquid
BUFFER	Tris-buffered Saline containing 0.1% BSA and 0.09% Sodium Azide
ISOTYPE	IgG
ORIGIN	USA
PRODUCTION PROCEDURES	Antibody was affinity purified using an epitope specific to NUP153 immobilized on solid support.

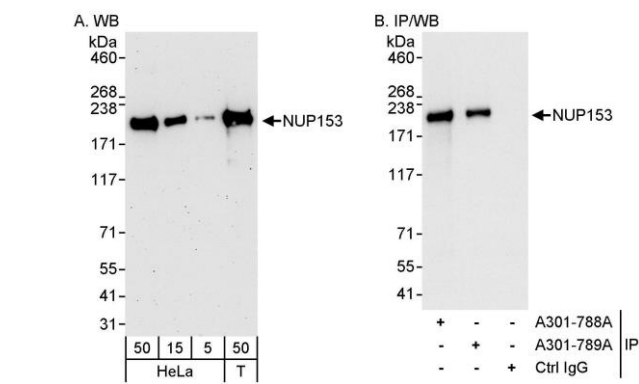
The epitope recognized by A301-788A-T maps to a region between residue 50 and 100 of human nucleoporin 153kDa using the numbering given in entry NP_005115.2 (GeneID 9972).

APPLICATIONS Centrifuge tube to remove product from lid. Optimal working dilutions should be determined experimentally by the investigator. Prepare working dilution immediately before use.

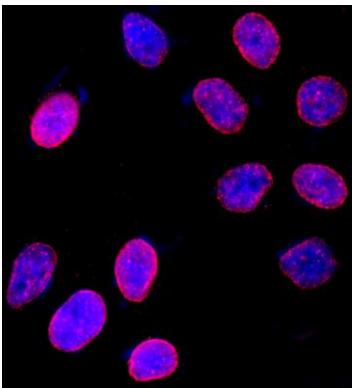
Western Blot	1:2,000 – 1:10,000
Immunoprecipitation	2 – 5 µg/mg lysate
Immunofluorescence (ICC)	1:100 – 1:500. Formaldehyde fixation is recommended. Permeabilization with Triton-X 100 is recommended for formaldehyde-fixed cells.

ADDITIONAL INFO <https://www.bethyl.com/product/A301-788A-T>
Use the link above to view SDS, a current list of citations, and other product specific information.
IP-western blot protocol: https://www.bethyl.com/content/protocol_IP_WB

This document certifies that this product has met all of the quality control standards defined by Bethyl Laboratories, Inc.
Michael Spencer, PhD Date: June 6, 2022



Detection of human NUP153 by western blot and immunoprecipitation. *Samples:* Whole cell lysate from HeLa (5, 15 and 50 μ g for WB; 1 mg for IP, 20% of IP loaded) and HEK293T (T; 50 μ g) cells. *Antibody:* Affinity purified rabbit anti-NUP153 antibody A301-788A used for WB at 0.04 μ g/ml (A) and 1 μ g/ml (B) and used for IP at 3 μ g/mg lysate. NUP153 was also immunoprecipitated by rabbit anti-NUP153 antibody A301-789A, which recognizes a downstream epitope. *Detection:* Chemiluminescence with exposure times of 3 minutes (A) and 1 second (B).



Detection of human NUP153 by immunocytochemistry. *Sample:* Formaldehyde-fixed asynchronous HeLa cells. *Antibody:* Affinity purified rabbit anti-NUP153 (Cat. No.A301-788A Lot1) used at a dilution of 1:200 (1 μ g/ml). *Detection:* Red-fluorescent goat anti-rabbit IgG highly cross-adsorbed Antibody used at a dilution of 1:100.