

# NUP50 Antibody

Rabbit Polyclonal

Antigen Affinity Purified

Protein ID NP\_009103.2

Catalog No. A301-783A-T

GeneID 10762

Lot No. A301-783A-T-1

**APPLICATIONS** WB, IP, IHC

**SPECIES REACTIVITY** Human, Mouse

**AMOUNT** 10 µl

**CONCENTRATION** 200 µg/ml

**STORAGE/SHELF LIFE** 2 – 8°C / 1 year from date of receipt

**PHYSICAL STATE** Liquid

**BUFFER** Tris-buffered Saline containing 0.1% BSA and 0.09% Sodium Azide

**ISOTYPE** IgG

**ORIGIN** USA

**PRODUCTION PROCEDURES** Antibody was affinity purified using an epitope specific to NUP50 immobilized on solid support.

The epitope recognized by A301-783A-T maps to a region between residue 418 and 468 of human nucleoporin 50kDa using the numbering given in entry NP\_009103.2 (GeneID 10762).

**APPLICATIONS** Centrifuge tube to remove product from lid. Optimal working dilutions should be determined experimentally by the investigator. Prepare working dilution immediately before use.

Western Blot 1:2,000 – 1:10,000

Immunoprecipitation 2 – 5 µg/mg lysate

Immunohistochemistry 1:200 – 1:1,000. Epitope retrieval with citrate buffer pH 6.0 is recommended for FFPE tissue sections.

**ADDITIONAL INFO** <https://www.bethyl.com/product/A301-783A-T>

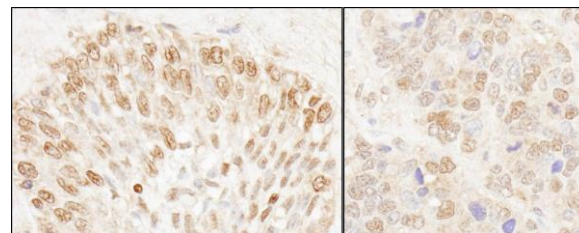
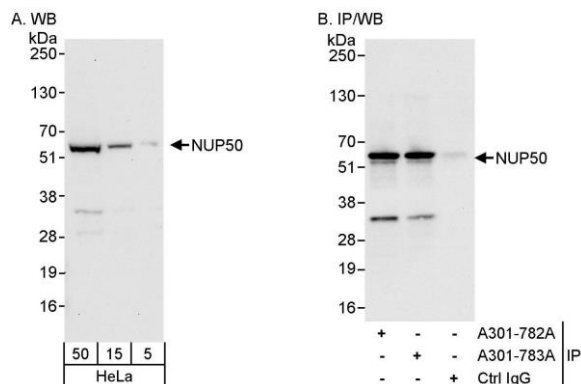
Use the link above to view SDS, a current list of citations, and other product specific information.

IP-western blot protocol: [https://www.bethyl.com/content/protocol\\_IP\\_WB](https://www.bethyl.com/content/protocol_IP_WB)

This document certifies that this product has met all of the quality control standards defined by Bethyl Laboratories, Inc.

Michael Spencer, PhD

Date: June 6, 2022



**Detection of human NUP50 by western blot and immunoprecipitation.** *Samples:* Whole cell lysate (5, 15 and 50 µg for WB; 1 mg for IP, 20% of IP loaded) from HeLa cells. *Antibody:* Affinity purified rabbit anti-NUP50 antibody A301-783A used for WB at 0.04 µg/ml (A) and 1 µg/ml (B) and used for IP at 3 µg/mg lysate. NUP50 was also immunoprecipitated by rabbit anti-NUP50 antibody A301-782A, which recognizes an upstream epitope. *Detection:* Chemiluminescence with exposure times of 30 seconds (A) and 3 seconds (B).

**Detection of human and mouse NUP50 by immunohistochemistry.** *Sample:* FFPE section of human prostate carcinoma (left) and mouse teratoma (right). *Antibody:* Affinity purified rabbit anti-NUP50 (Cat. No. A301-783A Lot1) used at a dilution of 1:200 (1 µg/ml). *Detection:* DAB