

NUP35 Antibody

Rabbit Polyclonal

Antigen Affinity Purified

Protein ID NP_612142.2

Catalog No. A301-781A-T

GeneID 129401

Lot No. A301-781A-T-2

APPLICATIONS WB, IP, IHC

SPECIES REACTIVITY Human, Mouse

PRESUMED REACTIVITY Based on 100% sequence identity, this antibody is predicted to react with Rat

AMOUNT 10 µl

CONCENTRATION 1000 µg/ml

STORAGE/SHELF LIFE 2 – 8°C / 1 year from date of receipt

PHYSICAL STATE Liquid

BUFFER Tris-citrate/phosphate buffer, pH 7 to 8 containing 0.09% Sodium Azide

ISOTYPE IgG

ORIGIN USA

PRODUCTION PROCEDURES Antibody was affinity purified using an epitope specific to NUP35 immobilized on solid support.

The epitope recognized by A301-781A-T maps to a region between residue 276 and 376 of human nucleoporin 35kDa using the numbering given in entry NP_612142.2 (GeneID 129401).

APPLICATIONS Centrifuge tube to remove product from lid. Optimal working dilutions should be determined experimentally by the investigator. Prepare working dilution immediately before use.

Western Blot 1:2,000 – 1:10,000

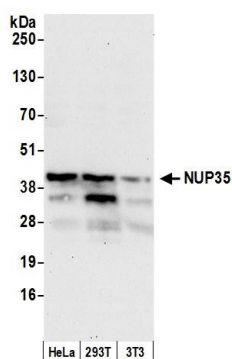
Immunoprecipitation 2 – 10 µg/mg lysate

Immunohistochemistry 1:500 – 1:2,000. Epitope retrieval with citrate buffer pH 6.0 is recommended for FFPE tissue sections.

ADDITIONAL INFO <https://www.bethyl.com/product/A301-781A-T>

Use the link above to view SDS, a current list of citations, and other product specific information.
IP-western blot protocol: https://www.bethyl.com/content/protocol_IP_WB

This document certifies that this product has met all of the quality control standards defined by Bethyl Laboratories, Inc.
Michael Spencer, PhD Date: June 6, 2022

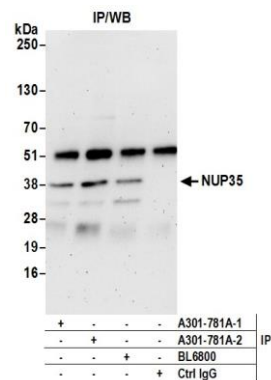


Detection of human and mouse NUP35 by western blot.

Samples: Whole cell lysate (50 µg) from HeLa, HEK293T, and mouse NIH 3T3 cells prepared using NETN lysis buffer.

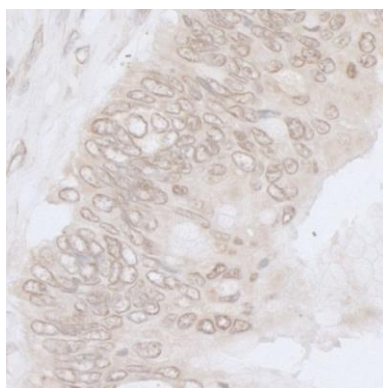
Antibody: Affinity purified rabbit anti-NUP35 antibody A301-781A (lot A301-781A-2) used for WB at 0.1 µg/ml.

Detection: Chemiluminescence with an exposure time of 30 seconds.



Detection of human NUP35 by western blot of immunoprecipitates.

Samples: Whole cell lysate (0.5 or 1.0 mg per IP reaction; 20% of IP loaded) from HeLa cells prepared using NETN lysis buffer. **Antibodies:** Affinity purified rabbit anti-NUP35 antibody A301-781A (lot A301-781A-2) used for IP at 6 µg per reaction. NUP35 was also immunoprecipitated by a previous lot of this antibody (lot A301-781A-1) and rabbit anti-NUP35 antibody BL6800. For blotting immunoprecipitated NUP35, A301-781A was used at 0.4 µg/ml. **Detection:** Chemiluminescence with an exposure time of 3 minutes.



Detection of human NUP35 by immunohistochemistry.

Sample: FFPE section of human colon carcinoma. **Antibody:**

Affinity purified rabbit anti-NUP35 (Cat. No. A301-781A Lot2) used at a dilution of 1:1,000 (1 µg/ml). **Detection:**

DAB