

# eIF3B/EIF3S9 Antibody

Rabbit Polyclonal

Antigen Affinity Purified	Protein ID	NP_003742.2
Catalog No. A301-761A-T	GeneID	8662
Lot No. A301-761A-T-2		

<b>APPLICATIONS</b>	WB, IP, IHC
<b>SPECIES REACTIVITY</b>	Human
<b>AMOUNT</b>	10 µl
<b>CONCENTRATION</b>	200 µg/ml
<b>STORAGE/SHELF LIFE</b>	2 – 8°C / 1 year from date of receipt
<b>PHYSICAL STATE</b>	Liquid
<b>BUFFER</b>	Tris-buffered Saline containing 0.1% BSA and 0.09% Sodium Azide
<b>ISOTYPE</b>	IgG
<b>ORIGIN</b>	USA
<b>PRODUCTION PROCEDURES</b>	Antibody was affinity purified using an epitope specific to eIF3B/EIF3S9 immobilized on solid support.

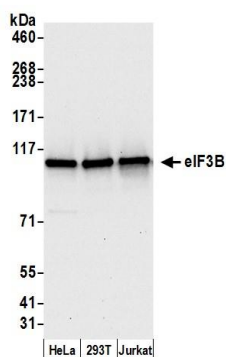
The epitope recognized by A301-761A-T maps to a region between residue 100 and 150 of human eukaryotic translation initiation factor 3, subunit B (eukaryotic translation initiation factor 3, subunit 9) using the numbering given in entry NP\_003742.2 (GeneID 8662).

**APPLICATIONS** Centrifuge tube to remove product from lid. Optimal working dilutions should be determined experimentally by the investigator. Prepare working dilution immediately before use.

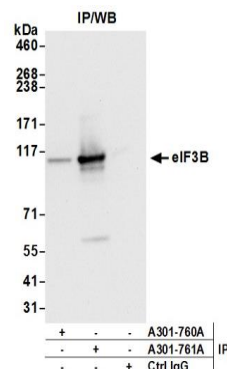
Western Blot	1:2,000 – 1:10,000
Immunoprecipitation	2 – 10 µg/mg lysate
Immunohistochemistry	1:100 – 1:500. Epitope retrieval with citrate buffer pH 6.0 is recommended for FFPE tissue sections.

**ADDITIONAL INFO** <https://www.bethyl.com/product/A301-761A-T>  
Use the link above to view SDS, a current list of citations, and other product specific information.  
IP-western blot protocol: [https://www.bethyl.com/content/protocol\\_IP\\_WB](https://www.bethyl.com/content/protocol_IP_WB)

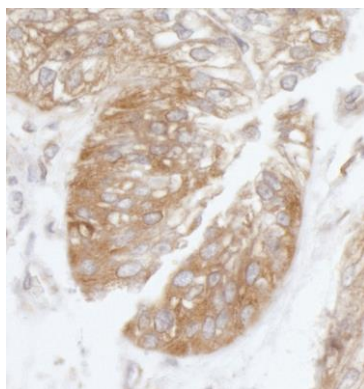
This document certifies that this product has met all of the quality control standards defined by Bethyl Laboratories, Inc.  
Michael Spencer, PhD Date: June 6, 2022



**Detection of human eIF3B by western blot.** *Samples:* Whole cell lysate (15 µg) from HeLa, HEK293T, and Jurkat cells prepared using NETN lysis buffer. *Antibody:* Affinity purified rabbit anti-eIF3B antibody A301-761A (lot A301-761A-2) used for WB at 0.1 µg/ml. *Detection:* Chemiluminescence with an exposure time of 10 seconds.



**Detection of human eIF3B by western blot of immunoprecipitates.** *Samples:* Whole cell lysate (1.0 mg per IP reaction; 20% of IP loaded) from HeLa cells prepared using NETN lysis buffer. *Antibodies:* Affinity purified rabbit anti-eIF3B antibody A301-761A (lot A301-761A-2) used for IP at 3 µg per reaction. eIF3B was also immunoprecipitated by rabbit anti-eIF3B antibody A301-760A. For blotting immunoprecipitated eIF3B, A301-761A was used at 1 µg/ml. *Detection:* Chemiluminescence with an exposure time of 3 seconds.



**Detection of human EIF3S9/eIF3B by immunohistochemistry.** *Sample:* FFPE section of human ovarian carcinoma. *Antibody:* Affinity purified rabbit anti-EIF3S9/eIF3B (Cat. No. A301-761A Lot 2) used at a dilution of 1:200 (1 µg/ml). *Detection:* DAB