

eIF3B/EIF3S9 Antibody

Rabbit Polyclonal

Antigen Affinity Purified

Protein ID NP_003742.2

Catalog No. A301-760A

GeneID 8662

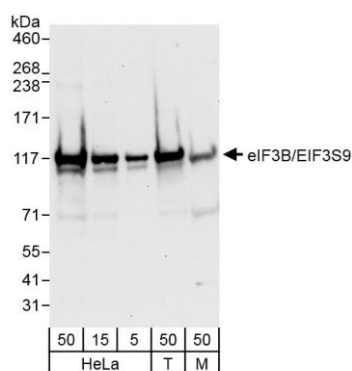
Lot No. A301-760A-1



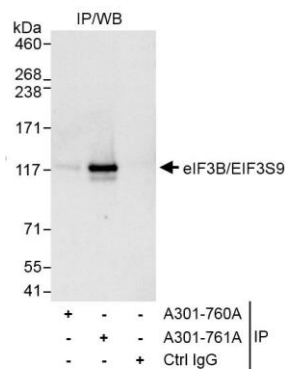
APPLICATIONS	WB				
SPECIES REACTIVITY	Human, Mouse				
AMOUNT	100 µl				
CONCENTRATION	200 µg/ml				
STORAGE/SHELF LIFE	2 – 8° C / 1 year from date of receipt				
PHYSICAL STATE	Liquid				
BUFFER	Tris-buffered Saline containing 0.1% BSA and 0.09% Sodium Azide				
ISOTYPE	IgG				
ORIGIN	USA				
PRODUCTION PROCEDURES	<p>Antibody was affinity purified using an epitope specific to eIF3B/EIF3S9 immobilized on solid support.</p> <p>The epitope recognized by A301-760A maps to a region between residue 1 and 50 of human eukaryotic translation initiation factor 3, subunit B (eukaryotic translation initiation factor 3, subunit 9) using the numbering given in entry NP_003742.2 (GeneID 8662).</p> <p>Immunoglobulin concentration was determined by extinction coefficient: absorbance at 280 nm of 1.4 equals 1.0 mg of IgG.</p>				
APPLICATIONS	<p>Centrifuge tube to remove product from lid. Optimal working dilutions should be determined experimentally by the investigator. Prepare working dilution immediately before use.</p> <table><tr><td>Western Blot</td><td>1:2,000 – 1:10,000</td></tr><tr><td>Immunoprecipitation</td><td>Not recommended. Use rabbit anti-eIF3B/EIF3S9 antibody A301-761A.</td></tr></table>	Western Blot	1:2,000 – 1:10,000	Immunoprecipitation	Not recommended. Use rabbit anti-eIF3B/EIF3S9 antibody A301-761A.
Western Blot	1:2,000 – 1:10,000				
Immunoprecipitation	Not recommended. Use rabbit anti-eIF3B/EIF3S9 antibody A301-761A.				
APPLICATION NOTES	Western blot of lysates performed using standard western blot reagents and 4-8% SDS-PAGE.				
ADDITIONAL INFO	<p>https://www.bethyl.com/product/A301-760A</p> <p>Use the link above to view SDS, a current list of citations, and other product specific information.</p>				

This document certifies that this product has met all of the quality control standards defined by Bethyl Laboratories, Inc.
Eric McIntush, PhD | Chief Scientific Officer

Date: October 21, 2019



Detection of human and mouse eIF3B/EIF3S9 by western blot. *Samples:* Whole cell lysate from HeLa (5, 15 and 50 µg), HEK293T (T; 50 µg), and mouse NIH 3T3 (M; 50 µg) cells. *Antibody:* Affinity purified rabbit anti-eIF3B/EIF3S9 antibody A301-760A (lot A301-760A-1) used for WB at 0.04 µg/ml. *Detection:* Chemiluminescence with exposure time of 30 second.



Detection of human and mouse eIF3B/EIF3S9 by western blot of immunoprecipitates. *Samples:* Whole cell lysate from HeLa (1 mg for IP, 20% of IP loaded) from HeLa cells. *Antibody:* Affinity purified rabbit anti-eIF3B/EIF3S9 antibody A301-760A (lot A301-760A-1) used for IP at 3 µg/mg lysate. eIF3B/EIF3S9 was immunoprecipitated efficiently by rabbit anti-eIF3B/EIF3S9 antibody A301-761A, which recognizes a downstream epitope. For blotting immunoprecipitated eIF3B/EIF3S9, A301-760A was used at 1.0 µg/ml. *Detection:* Chemiluminescence with exposure time of 1 second.