

# eIF2beta/EIF2S2 Antibody

Rabbit Polyclonal

Antigen Affinity Purified Protein ID NP\_003899.2

Catalog No. A301-743A-T GeneID 8894

Lot No. A301-743A-T-1

<b>APPLICATIONS</b>	WB, IP, IHC
<b>SPECIES REACTIVITY</b>	Human, Mouse
<b>PRESUMED REACTIVITY</b>	Based on 100% sequence identity, this antibody is predicted to react with Rabbit and Orangutan
<b>AMOUNT</b>	10 µl
<b>CONCENTRATION</b>	200 µg/ml
<b>STORAGE/SHELF LIFE</b>	2 – 8°C / 1 year from date of receipt
<b>PHYSICAL STATE</b>	Liquid
<b>BUFFER</b>	Tris-buffered Saline containing 0.1% BSA and 0.09% Sodium Azide
<b>ISOTYPE</b>	IgG
<b>ORIGIN</b>	USA
<b>PRODUCTION PROCEDURES</b>	Antibody was affinity purified using an epitope specific to eIF2beta/EIF2S2 immobilized on solid support.

The epitope recognized by A301-743A-T maps to a region between residue 283 and 333 of human eukaryotic translation initiation factor 2, subunit 2 beta, 38kDa using the numbering given in entry NP\_003899.2 (GeneID 8894).

**APPLICATIONS** Centrifuge tube to remove product from lid. Optimal working dilutions should be determined experimentally by the investigator. Prepare working dilution immediately before use.

Western Blot 1:2,000 – 1:10,000

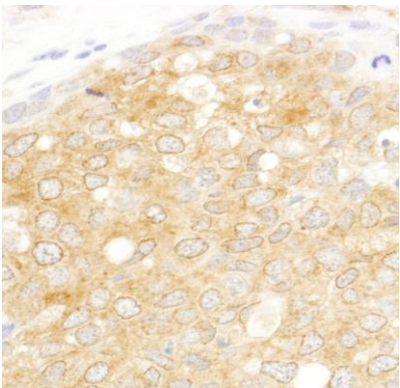
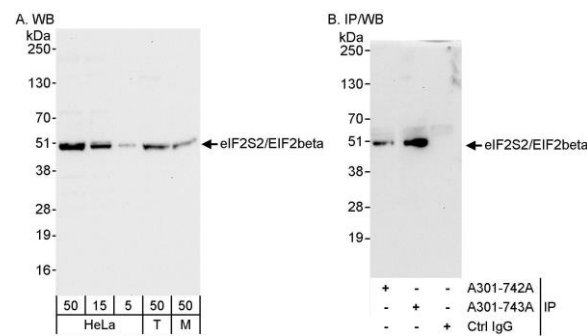
Immunoprecipitation 2 – 5 µg/mg lysate

Immunohistochemistry 1:100 – 1:500. Epitope retrieval with citrate buffer pH 6.0 is recommended for FFPE tissue sections.

**ADDITIONAL INFO** <https://www.bethyl.com/product/A301-743A-T>

Use the link above to view SDS, a current list of citations, and other product specific information.  
IP-western blot protocol: [https://www.bethyl.com/content/protocol\\_IP\\_WB](https://www.bethyl.com/content/protocol_IP_WB)

This document certifies that this product has met all of the quality control standards defined by Bethyl Laboratories, Inc.  
Michael Spencer, PhD Date: June 6, 2022



**Detection of human and mouse eIF2beta/EIF2S2 by western blot (h&m) and immunoprecipitation (h).**  
*Samples:* Whole cell lysate from HeLa (5, 15 and 50 µg for WB; 1 mg for IP, 20% of IP loaded), HEK293T (T; 50 µg), and mouse NIH 3T3 (M; 50 µg) cells. *Antibodies:* Affinity purified rabbit anti-eIF2beta/EIF2S2 antibody A301-743A used for WB at 0.04 µg/ml (A) and 1 µg/ml (B) and used for IP at 3 µg/mg lysate. eIF2beta/EIF2S2 was immunoprecipitated less efficiently by rabbit anti-eIF2beta/EIF2S2 antibody A301-742A, which recognizes an upstream epitope. *Detection:* Chemiluminescence with exposure times of 10 seconds (A and B).

**Detection of human eIF2beta/EIF2S2 by immunohistochemistry.** *Sample:* FFPE section of human breast carcinoma. *Antibody:* Affinity purified rabbit anti-eIF2beta/EIF2S2 (Cat. No. A301-743A) used at a dilution of 1:1,000 (1 µg/ml). *Detection:* DAB