

FBW7 Antibody

Rabbit Polyclonal

Antigen Affinity Purified

Protein ID NP_361014.1

Catalog No. A301-721A-T

GeneID 55294

Lot No. A301-721A-T-3

APPLICATIONS	IP, IHC
SPECIES REACTIVITY	Human
AMOUNT	10 µl
CONCENTRATION	1000 µg/ml
STORAGE/SHELF LIFE	2 – 8°C / 1 year from date of receipt
PHYSICAL STATE	Liquid
BUFFER	Tris-citrate/phosphate buffer, pH 7 to 8 containing 0.09% Sodium Azide
ISOTYPE	IgG
ORIGIN	USA
PRODUCTION PROCEDURES	Antibody was affinity purified using an epitope specific to FBW7 immobilized on solid support.

The epitope recognized by A301-721A-T maps to a region between residue 50 and 100 of human F-box and WD-40 domain protein 7 using the numbering given in entry NP_361014.1 (GeneID 55294).

Immunoglobulin concentration was determined by extinction coefficient: absorbance at 280 nm of 1.4 equals 1.0 mg of IgG.

APPLICATIONS Centrifuge tube to remove product from lid. Optimal working dilutions should be determined experimentally by the investigator. Prepare working dilution immediately before use.

Western Blot Not recommended

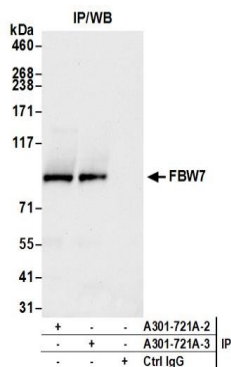
Immunoprecipitation 2 – 10 µg/mg lysate

Immunohistochemistry 1:1,000 to 1:5,000. Epitope retrieval with citrate buffer pH6.0 is recommended for FFPE tissue sections.

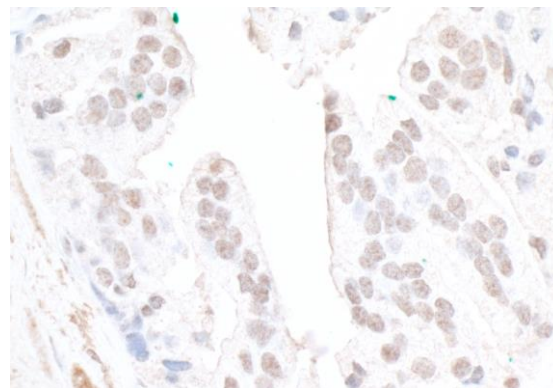
ADDITIONAL INFO <https://www.bethyl.com/product/A301-721A-T>

Use the link above to view SDS, a current list of citations, and other product specific information.
IP-western blot protocol: https://www.bethyl.com/content/protocol_IP_WB

This document certifies that this product has met all of the quality control standards defined by Bethyl Laboratories, Inc.
Michael Spencer, PhD Date: June 6, 2022



Detection of human FBW7 by western blot of immunoprecipitates. *Samples:* Whole cell lysate (1.0 mg per IP reaction; 20% of IP loaded) from HeLa cells prepared using NETN lysis buffer. *Antibodies:* Affinity purified Rabbit anti-FBW7 antibody A301-721A (lot A301-721A-3) used for IP at 6 µg per reaction. FBW7 was also immunoprecipitated by a previous lot of this antibody (lot A301-721A-2). For blotting immunoprecipitated FBW7, A301-721A was used at 1 µg/ml. *Detection:* Chemiluminescence with an exposure time of 10 seconds.



Detection of human FBW7 by immunohistochemistry. *Sample:* FFPE sections of human prostate carcinoma. *Antibody:* Affinity purified rabbit anti-FBW7 (Cat. No. A301-721A lot 3) used at 1:5,000 (0.2 µg/ml). *Detection:* DAB.