

BMI1 Antibody

Rabbit Polyclonal

Antigen Affinity Purified

Protein ID NP_005171.4

Catalog No. A301-694A-T

GeneID 648

Lot No. A301-694A-T-4

APPLICATIONS	WB, IP, IHC
SPECIES REACTIVITY	Human, Mouse
PRESUMED REACTIVITY	Based on 100% sequence identity, this antibody is predicted to react with Chicken, Bovine, Cat and Orangutan
AMOUNT	10 µl
CONCENTRATION	1000 µg/ml
STORAGE/SHELF LIFE	2 – 8°C / 1 year from date of receipt
PHYSICAL STATE	Liquid
BUFFER	Tris-citrate/phosphate buffer, pH 7 to 8 containing 0.09% Sodium Azide
ISOTYPE	IgG
ORIGIN	USA
PRODUCTION PROCEDURES	Antibody was affinity purified using an epitope specific to BMI1 immobilized on solid support.

The epitope recognized by A301-694A-T maps to a region between residue 276 and 326 of human B lymphoma Mo-MLV insertion region 1 homolog using the numbering given in entry NP_005171.4 (GeneID 648).

APPLICATIONS Centrifuge tube to remove product from lid. Optimal working dilutions should be determined experimentally by the investigator. Prepare working dilution immediately before use.

Western Blot 1:2,000 – 1:10,000

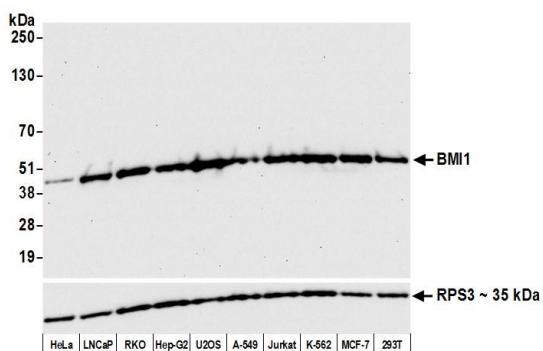
Immunoprecipitation 2 – 10 µg/mg lysate

Immunohistochemistry 1:500 – 1:2,000. Epitope retrieval with citrate buffer pH 6.0 is recommended for FFPE tissue sections.

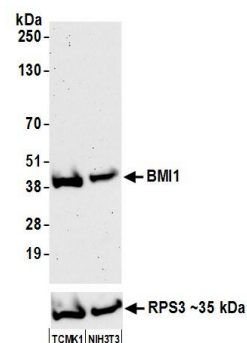
ADDITIONAL INFO <https://www.bethyl.com/product/A301-694A-T>

Use the link above to view SDS, a current list of citations, and other product specific information.
IP-western blot protocol: https://www.bethyl.com/content/protocol_IP_WB

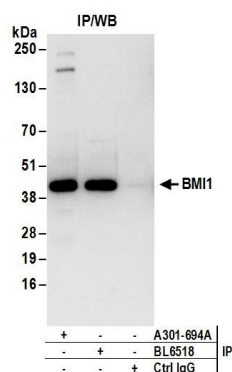
This document certifies that this product has met all of the quality control standards defined by Bethyl Laboratories, Inc.
Michael Spencer, PhD Date: June 6, 2022



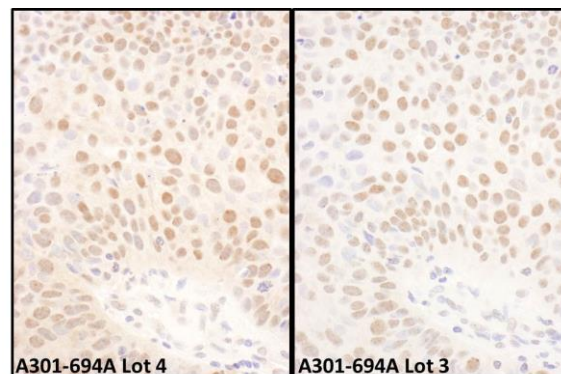
Detection of human BMI1 by western blot. *Samples:* Whole cell lysate (50 µg) from HeLa, LNCaP, RKO, Hep-G2, U2OS, A-549, Jurkat, K-562, MCF-7, and HEK293T cells prepared using NETN lysis buffer. *Antibody:* Affinity purified Rabbit anti-BMI1 antibody A301-694A (lot A301-694A-4) used for WB at 0.04 µg/ml. *Detection:* Chemiluminescence with an exposure time of 10 seconds. Lower Panel: Rabbit anti-RPS3 (A303-840A).



Detection of mouse BMI1 by western blot. *Samples:* Whole cell lysate (50 µg) from TCMK-1 and NIH 3T3 cells prepared using NETN lysis buffer. *Antibody:* Affinity purified Rabbit anti-BMI1 antibody A301-694A (lot A301-694A-4) used for WB at 0.04 µg/ml. *Detection:* Chemiluminescence with an exposure time of 75 seconds. Lower Panel: Rabbit anti-RPS3 (A303-840A).



Detection of human BMI1 by western blot of immunoprecipitates. *Samples:* Whole cell lysate (1 mg for IP; 20% of IP loaded) from HeLa cells. *Antibodies:* Affinity purified rabbit anti-BMI1 antibody A301-694A (lot A301-694A-4) used for IP at 6 µg/mg lysate. BMI1 was also immunoprecipitated by rabbit anti-BMI1 antibody BL6518. *Detection:* Chemiluminescence with an exposure time of 10 seconds.



Detection of human BMI1 by immunohistochemistry. *Sample:* FFPE section of human lung carcinoma. *Antibody:* Affinity purified rabbit anti-BMI1 (Cat. No. A301-694A Lot4-left and Cat. No. A301-694A Lot3-right) used at a dilution of 1:1,000 (1µg/ml). *Detection:* DAB