

ESCO2 Antibody

Rabbit Polyclonal

Antigen Affinity Purified

Protein ID NP_001017420.1

Catalog No. A301-689A-T

GeneID 157570

Lot No. A301-689A-T-3

APPLICATIONS WB, IP

SPECIES REACTIVITY Human

AMOUNT 10 µl

CONCENTRATION 1000 µg/ml

STORAGE/SHELF LIFE 2 – 8°C / 1 year from date of receipt

PHYSICAL STATE Liquid

BUFFER Tris-citrate/phosphate buffer, pH 7 to 8 containing 0.09% Sodium Azide

ISOTYPE IgG

ORIGIN USA

PRODUCTION PROCEDURES Antibody was affinity purified using an epitope specific to ESCO2 immobilized on solid support.

The epitope recognized by A301-689A-T maps to a region between residue 200 and 250 of human establishment of cohesion 1 homolog 2 using the numbering given in entry NP_001017420.1 (GeneID 157570).

APPLICATIONS Centrifuge tube to remove product from lid. Optimal working dilutions should be determined experimentally by the investigator. Prepare working dilution immediately before use.

Western Blot 1:2,000 – 1:10,000

Immunoprecipitation 2 – 10 µg/mg lysate

ADDITIONAL INFO <https://www.bethyl.com/product/A301-689A-T>

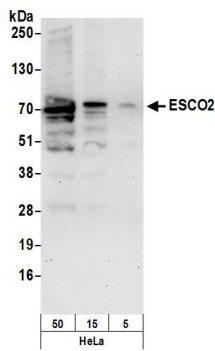
Use the link above to view SDS, a current list of citations, and other product specific information.

IP-western blot protocol: https://www.bethyl.com/content/protocol_IP_WB

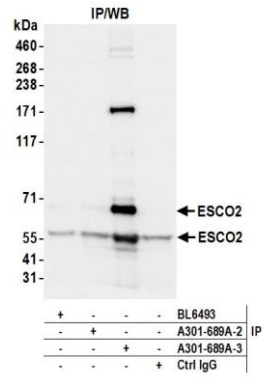
This document certifies that this product has met all of the quality control standards defined by Bethyl Laboratories, Inc.

Michael Spencer, PhD

Date: June 6, 2022



Detection of human ESCO2 by western blot. *Samples:* Whole cell lysate (50, 15, 5 μ g) from HeLa cells prepared using NETN lysis buffer. *Antibody:* Affinity purified rabbit anti-ESCO2 antibody (A301-689A lot 3) used for WB at 0.1 μ g/ml. *Detection:* Chemiluminescence with an exposure time of 3 seconds.



Detection of human ESCO2 by western blot of immunoprecipitates. *Samples:* Whole cell lysate (1.0 mg per IP reaction; 15 % of IP loaded) from HeLa cells prepared using NETN lysis buffer. *Antibodies:* Affinity purified rabbit anti-ESCO2 antibody (A301-689A lot 3) used for IP at 6 μ g per reaction. ESCO2 was also immunoprecipitated by a previous lot of this antibody (A301-689A lot 2) and a second antibody against a different epitope of ESCO2 (BL6493). For blotting immunoprecipitated ESCO2, A301-689A was used at 0.1 μ g/ml. *Detection:* Chemiluminescence with an exposure time of 1 second.