

# ESCO2 Antibody

Rabbit Polyclonal

Antigen Affinity Purified

Protein ID NP\_001017420.1

Catalog No. A301-689A

GeneID 157570

Lot No. A301-689A-3

**APPLICATIONS** WB, IP

**SPECIES REACTIVITY** Human

**AMOUNT** 100 µl

**CONCENTRATION** 1000 µg/ml

**STORAGE/SHELF LIFE** 2 – 8°C / 1 year from date of receipt

**PHYSICAL STATE** Liquid

**BUFFER** Tris-citrate/phosphate buffer, pH 7 to 8 containing 0.09% Sodium Azide

**ISOTYPE** IgG

**ORIGIN** USA

**PRODUCTION PROCEDURES** Antibody was affinity purified using an epitope specific to ESCO2 immobilized on solid support.

The epitope recognized by A301-689A maps to a region between residue 200 and 250 of human establishment of cohesion 1 homolog 2 using the numbering given in entry NP\_001017420.1 (GeneID 157570).

Immunoglobulin concentration was determined by extinction coefficient: absorbance at 280 nm of 1.4 equals 1.0 mg of IgG.

**APPLICATIONS** Centrifuge tube to remove product from lid. Optimal working dilutions should be determined experimentally by the investigator. Prepare working dilution immediately before use.

Western Blot 1:2,000 – 1:10,000

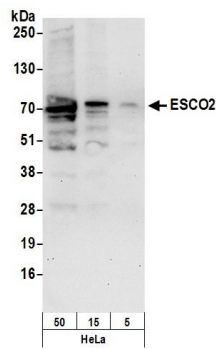
Immunoprecipitation 2 – 10 µg/mg lysate

**ADDITIONAL INFO** <https://www.bethyl.com/product/A301-689A>

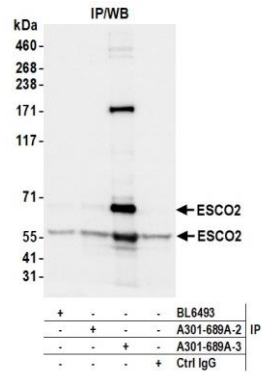
Use the link above to view SDS, a current list of citations, and other product specific information.

IP-western blot protocol: [https://www.bethyl.com/content/protocol\\_IP\\_WB](https://www.bethyl.com/content/protocol_IP_WB)

This document certifies that this product has met all of the quality control standards defined by Bethyl Laboratories, Inc.  
Michael Spencer, PhD Date: February 1, 2022



**Detection of human ESCO2 by western blot.** *Samples:* Whole cell lysate (50, 15, 5 µg) from HeLa cells prepared using NETN lysis buffer. *Antibody:* Affinity purified rabbit anti-ESCO2 antibody (A301-689A lot 3) used for WB at 0.1 µg/ml. *Detection:* Chemiluminescence with an exposure time of 3 seconds.



**Detection of human ESCO2 by western blot of immunoprecipitates.** *Samples:* Whole cell lysate (1.0 mg per IP reaction; 15 % of IP loaded) from HeLa cells prepared using NETN lysis buffer. *Antibodies:* Affinity purified rabbit anti-ESCO2 antibody (A301-689A lot 3) used for IP at 6 µg per reaction. ESCO2 was also immunoprecipitated by a previous lot of this antibody (A301-689A lot 2) and a second antibody against a different epitope of ESCO2 (BL6493). For blotting immunoprecipitated ESCO2, A301-689A was used at 0.1 µg/ml. *Detection:* Chemiluminescence with an exposure time of 1 second.