

14-3-3 Sigma Antibody

Rabbit Polyclonal

Antigen Affinity Purified Protein ID NP_006133.1

Catalog No. A301-648A-T GeneID 2810

Lot No. A301-648A-T-4

APPLICATIONS WB, IP, IHC

SPECIES REACTIVITY Human

AMOUNT 10 µl

CONCENTRATION 1000 µg/ml

STORAGE/SHELF LIFE 2 – 8°C / 1 year from date of receipt

PHYSICAL STATE Liquid

BUFFER Tris-citrate/phosphate buffer, pH 7 to 8 containing 0.09% Sodium Azide

ISOTYPE IgG

ORIGIN USA

PRODUCTION PROCEDURES Antibody was affinity purified using an epitope specific to 14-3-3 Sigma immobilized on solid support.

The epitope recognized by A301-648A-T maps to a region between residue 198 and 248 of human 14-3-3 sigma using the numbering given in entry NP_006133.1 (GeneID 2810).

APPLICATIONS Centrifuge tube to remove product from lid. Optimal working dilutions should be determined experimentally by the investigator. Prepare working dilution immediately before use.

Western Blot 1:10,000 – 1:25,000

Immunoprecipitation 2 – 10 µg/mg lysate

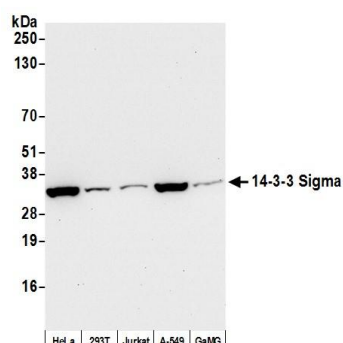
Immunohistochemistry 1:2,000 to 1:10,000. Epitope retrieval with citrate buffer pH6.0 is recommended for FFPE tissue sections.

ADDITIONAL INFO <https://www.bethyl.com/product/A301-648A-T>

Use the link above to view SDS, a current list of citations, and other product specific information.

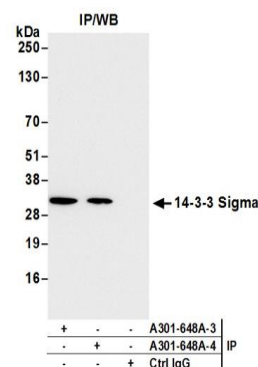
IP-western blot protocol: https://www.bethyl.com/content/protocol_IP_WB

This document certifies that this product has met all of the quality control standards defined by Bethyl Laboratories, Inc.
Michael Spencer, PhD Date: June 6, 2022



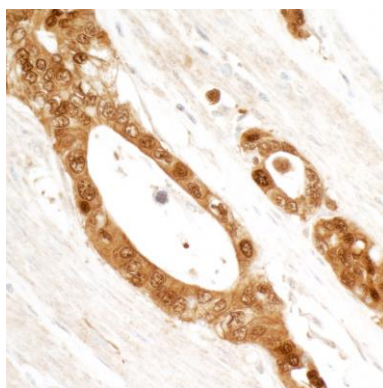
Detection of human 14-3-3 Sigma by western blot.

Samples: Whole cell lysate (50 µg) from HeLa, HEK293T, Jurkat, A-549, and GaMG cells prepared using NETN lysis buffer. **Antibody:** Affinity purified rabbit anti-14-3-3 Sigma antibody A301-648A (lot A301-648A-4) used for WB at 0.04 µg/ml. **Detection:** Chemiluminescence with an exposure time of 30 seconds.



Detection of human 14-3-3 Sigma by western blot of immunoprecipitates.

Samples: Whole cell lysate (1.0 mg per IP reaction; 20% of IP loaded) from HeLa cells prepared using NETN lysis buffer. **Antibodies:** Affinity purified rabbit anti-14-3-3 Sigma antibody A301-648A (lot A301-648A-4) used for IP at 6 µg per reaction. 14-3-3 Sigma was also immunoprecipitated by a previous lot of this antibody (lot A301-648A-3). For blotting immunoprecipitated 14-3-3 Sigma, A301-648A was used at 0.04 µg/ml. **Detection:** Chemiluminescence with an exposure time of 1 second.



Detection of human 14-3-3 Sigma by immunohistochemistry.

Sample: FFPE section of human ovarian carcinoma. **Antibody:** Affinity purified rabbit anti-14-3-3 Sigma (Cat. No. A301-648A lot 4) used at a dilution of 1:5,000 (0.2 µg/ml). **Detection:** DAB