

FIP200/RB1CC1 Antibody



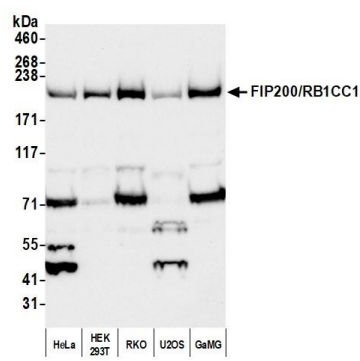
Rabbit Polyclonal

Antigen Affinity Purified	RefSeq ID	NP_055596.2
Catalog No. A301-536A-T	Uniprot ID	Q8TDY2
Lot No. 2	GeneID	9821

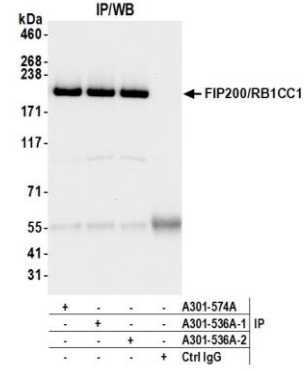
APPLICATIONS	WB, IP
SPECIES REACTIVITY	Human, Mouse
AMOUNT	10 µl
CONCENTRATION	1000 µg/ml
STORAGE/SHELF LIFE	2 – 8°C / 1 year from date of receipt
PHYSICAL STATE	Liquid
BUFFER	Tris-citrate/phosphate buffer, pH 7 to 8 containing 0.09% Sodium Azide
ISOTYPE	IgG
ORIGIN	USA
PRODUCTION PROCEDURES	<p>Antibody was affinity purified using an epitope specific to FIP200/RB1CC1 immobilized on solid support.</p> <p>The epitope recognized by A301-536A-T maps to a region between residue 1544 and 1594 of human 200 kDa FAK family kinase-interacting protein (RB1-inducible coiled-coil 1) using the numbering given in entry NP_055596.2 (GeneID 9821).</p> <p>Immunoglobulin concentration was determined using Beer’s Law where 1mg/mL IgG has an A280 of 1.4.</p>
APPLICATIONS	<p>Centrifuge tube to remove product from lid. Optimal working dilutions should be determined experimentally by the investigator. Prepare working dilution immediately before use.</p> <p>Western Blot 1:1000 – 1:5000</p> <p>Immunoprecipitation 6 µg/mg lysate</p>
ADDITIONAL INFO	<p>https://www.fortislife.com/p/A301-536A-T</p> <p>Use the link above to view SDS, a current list of citations, and other product specific information.</p>

This document certifies that this product has met all of the quality control standards defined by Bethyl Laboratories, Inc.
Michael Spencer, PhD

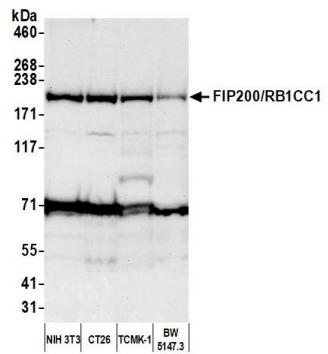
Date: April 2, 2024



Detection of human FIP200/RB1CC1 by western blot.
Samples: Whole cell lysate (50 µg) from HeLa, HEK293T, RKO, U2OS, and GaMG cells prepared using NETN lysis buffer. *Antibody:* Affinity purified rabbit anti-FIP200/RB1CC1 antibody (A301-536A lot 2) used for WB at 1 µg/ml. *Detection:* Chemiluminescence with an exposure time of 30 seconds.



Detection of human FIP200/RB1CC1 by western blot of immunoprecipitates. *Samples:* Whole cell lysate (1.0 mg per IP reaction; 20% of IP loaded) from HEK293T cells prepared using NETN lysis buffer. *Antibody:* Affinity purified rabbit anti-FIP200/RB1CC1 antibody (A301-536A lot 2) used for IP at 6 µg per reaction. FIP200/RB1CC1 was also immunoprecipitated by a previous lot of this antibody (A301-536A lot 1) and a second antibody against a different epitope of FIP200/RB1CC1 (A301-574A). For blotting immunoprecipitated FIP200/RB1CC1, A301-536A was used at 1 µg/ml. *Detection:* Chemiluminescence with an exposure time of 10 seconds.



Detection of mouse FIP200/RB1CC1 by western blot.
Samples: Whole cell lysate (50 µg) from NIH 3T3, CT26, TCMK-1, and BW5147.3 cells prepared using NETN lysis buffer. *Antibody:* Affinity purified rabbit anti-FIP200/RB1CC1 antibody (A301-536A lot 2) used for WB at 1 µg/ml. *Detection:* Chemiluminescence with an exposure time of 75 seconds.