

FIP200/RB1CC1 Antibody

Rabbit Polyclonal

Antigen Affinity Purified

RefSeq ID NP_055596.2

Catalog No. A301-536A

Uniprot ID Q8TDY2

Lot No. 2

GeneID 9821

| | |
|------------------------------|---|
| APPLICATIONS | WB, IP |
| SPECIES REACTIVITY | Human, Mouse |
| AMOUNT | 100 µl |
| CONCENTRATION | 1000 µg/ml |
| STORAGE/SHELF LIFE | 2 – 8°C / 1 year from date of receipt |
| PHYSICAL STATE | Liquid |
| BUFFER | Tris-citrate/phosphate buffer, pH 7 to 8 containing 0.09% Sodium Azide |
| ISOTYPE | IgG |
| ORIGIN | USA |
| PRODUCTION PROCEDURES | Antibody was affinity purified using an epitope specific to FIP200/RB1CC1 immobilized on solid support. |

The epitope recognized by A301-536A maps to a region between residue 1544 and 1594 of human 200 kDa FAK family kinase-interacting protein (RB1-inducible coiled-coil 1) using the numbering given in entry NP_055596.2 (GeneID 9821).

Immunoglobulin concentration was determined using Beer's Law where 1mg/mL IgG has an A280 of 1.4.

APPLICATIONS Centrifuge tube to remove product from lid. Optimal working dilutions should be determined experimentally by the investigator. Prepare working dilution immediately before use.

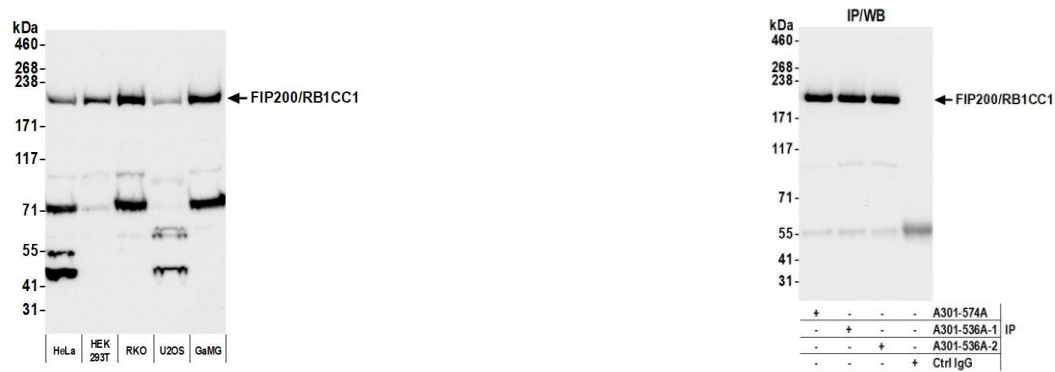
Western Blot 1:1000 – 1:5000

Immunoprecipitation 6 µg/mg lysate

ADDITIONAL INFO <https://www.fortislife.com/p/A301-536A>

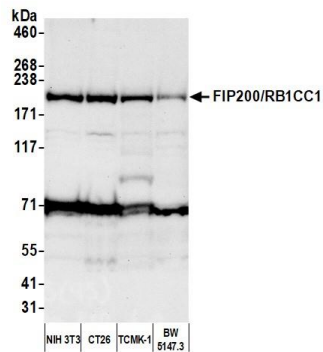
Use the link above to view SDS, a current list of citations, and other product specific information.

This document certifies that this product has met all of the quality control standards defined by Bethyl Laboratories, Inc.
Michael Spencer, PhD Date: April 2, 2024



Detection of human FIP200/RB1CC1 by western blot.
Samples: Whole cell lysate (50 µg) from HeLa, HEK293T, RKO, U2OS, and GaMG cells prepared using NETN lysis buffer. *Antibody:* Affinity purified rabbit anti-FIP200/RB1CC1 antibody (A301-536A lot 2) used for WB at 1 µg/ml. *Detection:* Chemiluminescence with an exposure time of 30 seconds.

Detection of human FIP200/RB1CC1 by western blot of immunoprecipitates. *Samples:* Whole cell lysate (1.0 mg per IP reaction; 20% of IP loaded) from HEK293T cells prepared using NETN lysis buffer. *Antibody:* Affinity purified rabbit anti-FIP200/RB1CC1 antibody (A301-536A lot 2) used for IP at 6 µg per reaction. FIP200/RB1CC1 was also immunoprecipitated by a previous lot of this antibody (A301-536A lot 1) and a second antibody against a different epitope of FIP200/RB1CC1 (A301-574A). For blotting immunoprecipitated FIP200/RB1CC1, A301-536A was used at 1 µg/ml. *Detection:* Chemiluminescence with an exposure time of 10 seconds.



Detection of mouse FIP200/RB1CC1 by western blot.
Samples: Whole cell lysate (50 µg) from NIH 3T3, CT26, TCMK-1, and BW5147.3 cells prepared using NETN lysis buffer. *Antibody:* Affinity purified rabbit anti-FIP200/RB1CC1 antibody (A301-536A lot 2) used for WB at 1 µg/ml. *Detection:* Chemiluminescence with an exposure time of 75 seconds.