

ERCC5/XPG Antibody

Rabbit Polyclonal

Antigen Affinity Purified

Protein ID NP_000114.2

Catalog No. A301-485A-T

GeneID 2073

Lot No. A301-485A-T-1

APPLICATIONS IP

SPECIES REACTIVITY Human

AMOUNT 10 µl

CONCENTRATION 1000 µg/ml

STORAGE/SHELF LIFE 2 – 8°C / 1 year from date of receipt

PHYSICAL STATE Liquid

BUFFER Tris-citrate/phosphate buffer, pH 7 to 8 containing 0.09% Sodium Azide

ISOTYPE IgG

ORIGIN USA

PRODUCTION PROCEDURES Antibody was affinity purified using an epitope specific to ERCC5/XPG immobilized on solid support.

The epitope recognized by A301-485A-T maps to a region between residue 1136 and 1186 of human excision repair cross-complementing rodent repair deficiency, complementation group 5 (xeroderma pigmentosum, complementation group G (Cockayne syndrome)) using the numbering given in entry NP_000114.2 (GeneID 2073).

Immunoglobulin concentration was determined by extinction coefficient: absorbance at 280 nm of 1.4 equals 1.0 mg of IgG.

APPLICATIONS Centrifuge tube to remove product from lid. Optimal working dilutions should be determined experimentally by the investigator. Prepare working dilution immediately before use.

Western Blot Not recommended. Use rabbit anti-ERCC5/XPG antibody A301-484A.

Immunoprecipitation 2 – 5 µg/mg lysate

ADDITIONAL INFO <https://www.bethyl.com/product/A301-485A-T>

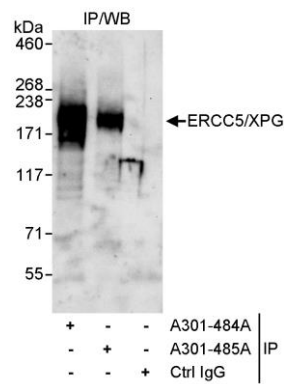
Use the link above to view SDS, a current list of citations, and other product specific information.

IP-western blot protocol: https://www.bethyl.com/content/protocol_IP_WB

This document certifies that this product has met all of the quality control standards defined by Bethyl Laboratories, Inc.

Michael Spencer, PhD

Date: June 6, 2022



Detection of human ERCC5/XPG by western blot of immunoprecipitates. *Samples:* Whole cell lysate (1 mg for IP, 20% of IP loaded) from HeLa cells. *Antibodies:* Affinity purified rabbit anti-ERCC5/XPG antibody A301-485A used for IP at 3 µg/mg lysate. ERCC5/XPG was also immunoprecipitated by rabbit anti-ERCC5/XPG antibody A301-484A, which recognizes an upstream epitope. For blotting immunoprecipitated ERCC5/XPG, A301-485A was used at 1 µg/ml. *Detection:* Chemiluminescence with an exposure time of 30 seconds.