

# ERCC5/XPG Antibody

Rabbit Polyclonal

Antigen Affinity Purified	RefSeq ID	NP_000114.2
Catalog No. A301-484A	Uniprot ID	P28715
Lot No. 3	GeneID	2073

<b>APPLICATIONS</b>	WB, IP, IHC
<b>SPECIES REACTIVITY</b>	Human
<b>AMOUNT</b>	100 µl
<b>CONCENTRATION</b>	1000 µg/ml
<b>STORAGE/SHELF LIFE</b>	2 – 8°C / 1 year from date of receipt
<b>PHYSICAL STATE</b>	Liquid
<b>BUFFER</b>	Tris-citrate/phosphate buffer, pH 7 to 8 containing 0.09% Sodium Azide
<b>ISOTYPE</b>	IgG
<b>ORIGIN</b>	USA
<b>PRODUCTION PROCEDURES</b>	Antibody was affinity purified using an epitope specific to ERCC5/XPG immobilized on solid support.

The epitope recognized by A301-484A maps to a region between residue 650 and 700 of human excision repair cross-complementing rodent repair deficiency, complementation group 5 (xeroderma pigmentosum, complementation group G (Cockayne syndrome)) using the numbering given in entry NP\_000114.2 (GeneID 2073).

Immunoglobulin concentration was determined by extinction coefficient: absorbance at 280 nm of 1.4 equals 1.0 mg of IgG.

**APPLICATIONS** Centrifuge tube to remove product from lid. Optimal working dilutions should be determined experimentally by the investigator. Prepare working dilution immediately before use.

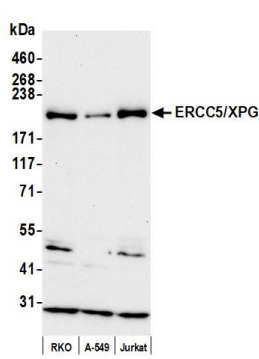
Western Blot	1:2,000 – 1:10,000
Immunoprecipitation	2 – 10 µg/mg lysate
Immunohistochemistry	1:500 to 1:2,000. Epitope retrieval with citrate buffer pH6.0 is recommended for FFPE tissue sections.

**IHC HUMAN CONTROLS** Colon Carcinoma, Ovarian Carcinoma

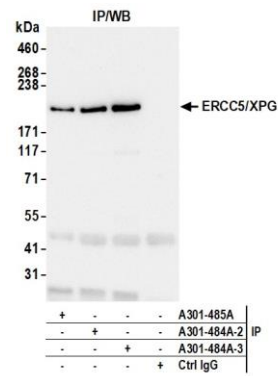
**ADDITIONAL INFO** <https://www.fortislifesciences.com/p/A301-484A>

Use the link above to view SDS, a current list of citations, and other product specific information.

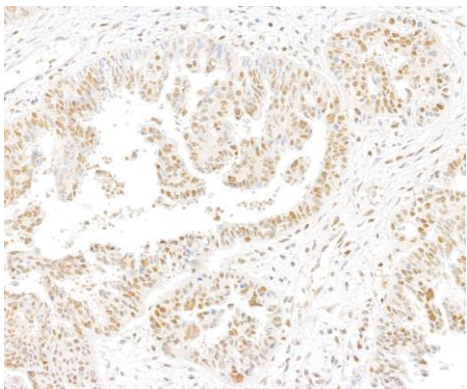
This document certifies that this product has met all of the quality control standards defined by Bethyl Laboratories, Inc.  
Michael Spencer, PhD Date: April 25, 2023



**Detection of human ERCC5/XPG by western blot.**  
*Samples:* Whole cell lysate (50 µg) from RKO, A-549, and Jurkat cells prepared using NETN lysis buffer. *Antibody:* Affinity purified rabbit anti-ERCC5/XPG antibody (A301-484A lot 3) used for WB at 0.4 µg/ml. *Detection:* Chemiluminescence with an exposure time of 75 seconds.



**Detection of human ERCC5/XPG by western blot of immunoprecipitates.** *Samples:* Whole cell lysate (1.0 mg per IP reaction; 20% of IP loaded) from Jurkat cells prepared using NETN lysis buffer. *Antibodies:* Affinity purified rabbit anti-ERCC5/XPG antibody (A301-484A lot 3) used for IP at 6 µg per reaction. ERCC5/XPG was also immunoprecipitated by a previous lot of this antibody (A301-484A lot 2) and a second antibody against a different epitope of ERCC5/XPG (A301-485A). For blotting immunoprecipitated ERCC5/XPG, A301-484A was used at 0.04 µg/ml. *Detection:* Chemiluminescence with an exposure time of 10 seconds.



**Detection of human ERCC5/XPG by immunohistochemistry.** *Sample:* FFPE section of human colon carcinoma. *Antibody:* Affinity purified rabbit anti-ERCC5/XPG (A301-484A lot 3) used at a dilution of 1:1000 (0.2µg/ml). *Detection:* DAB