

PARP1 Antibody

Rabbit Polyclonal

Antigen Affinity Purified Protein ID NP_001609.1

Catalog No. A301-376A-T GenelD 142

Lot No. A301-376A-T-1

APPLICATIONS	WB, IHC, IHC-IF
SPECIES REACTIVITY	Human
AMOUNT	10 µl
CONCENTRATION	200 µg/ml
STORAGE/SHELF LIFE	2 – 8°C / 1 year from date of receipt
PHYSICAL STATE	Liquid
BUFFER	Tris-buffered Saline containing 0.1% BSA and 0.09% Sodium Azide
ISOTYPE	IgG
ORIGIN	USA
PRODUCTION PROCEDURES	Antibody was affinity purified using an epitope specific to PARP1 immobilized on solid support.

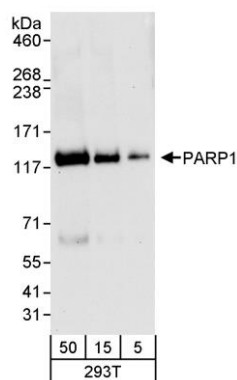
The epitope recognized by A301-376A-T maps to a region between residue 50 and 100 of human poly (ADP-ribose) polymerase family, member 1 using the numbering given in entry NP_001609.1 (GenelD 142).

APPLICATIONS Centrifuge tube to remove product from lid. Optimal working dilutions should be determined experimentally by the investigator. Prepare working dilution immediately before use.

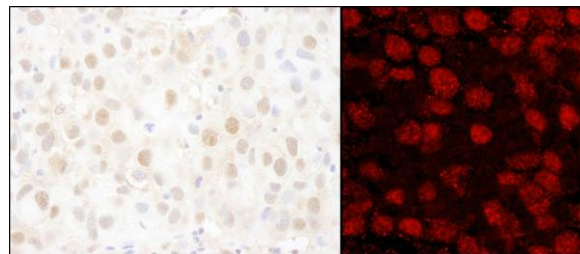
Western Blot	1:2,000 – 1:10,000
Immunoprecipitation	Not recommended
Immunohistochemistry	1:100 – 1:500. Epitope retrieval with citrate buffer pH 6.0 is recommended for FFPE tissue sections.
Immunofluorescence (IHC)	1:50 – 1:250

ADDITIONAL INFO <https://www.bethyl.com/product/A301-376A-T>
Use the link above to view SDS, a current list of citations, and other product specific information.

This document certifies that this product has met all of the quality control standards defined by Bethyl Laboratories, Inc.
Michael Spencer, PhD Date: June 6, 2022



Detection of human PARP1 by western blot. *Samples:* Whole cell lysate (5, 15 and 50 µg) from HEK293T cells. *Antibody:* Affinity purified rabbit anti-PARP1 antibody A301-376A used for WB at 0.04 µg/ml. *Detection:* Chemiluminescence with an exposure time of 30 seconds.



Detection of human PARP1 by immunohistochemistry. *Sample:* FFPE sections of human breast carcinoma. *Antibody:* Affinity purified rabbit anti-PARP1 (Cat. No. A301-376A Lot1) used at a dilution of 1:200 (1 µg/ml) and 1:80 (2.5 µg/ml). *Detection:* DAB and Red-fluorescent goat anti-rabbit IgG-heavy and light chain, cross-adsorbed Antibody DyLight® 594 Conjugated used at a dilution of 1:100