

# ERCC3 Antibody

Rabbit Polyclonal

Antigen Affinity Purified

Protein ID NP\_000113.1

Catalog No. A301-336A-T

GeneID 2071

Lot No. A301-336A-T-2

<b>APPLICATIONS</b>	IP, IHC
<b>SPECIES REACTIVITY</b>	Human
<b>PRESUMED REACTIVITY</b>	Based on 100% sequence identity, this antibody is predicted to react with Mouse, Rat, Zebrafish, Bovine and Orangutan
<b>AMOUNT</b>	10 µl
<b>CONCENTRATION</b>	1000 µg/ml
<b>STORAGE/SHELF LIFE</b>	2 – 8°C / 1 year from date of receipt
<b>PHYSICAL STATE</b>	Liquid
<b>BUFFER</b>	Tris-citrate/phosphate buffer, pH 7 to 8 containing 0.09% Sodium Azide
<b>ISOTYPE</b>	IgG
<b>ORIGIN</b>	USA
<b>PRODUCTION PROCEDURES</b>	Antibody was affinity purified using an epitope specific to ERCC3 immobilized on solid support.

The epitope recognized by A301-336A-T maps to a region between residue 575 and 625 of human excision repair cross-complementing rodent repair deficiency, complementation group 3 using the numbering given in entry NP\_000113.1 (GeneID 2071).

Immunoglobulin concentration was determined by extinction coefficient: absorbance at 280 nm of 1.4 equals 1.0 mg of IgG.

**APPLICATIONS** Centrifuge tube to remove product from lid. Optimal working dilutions should be determined experimentally by the investigator. Prepare working dilution immediately before use.

Western Blot Not recommended. Use rabbit anti-ERCC3 antibody A301-337A.

Immunoprecipitation 2 – 5 µg/mg lysate

Immunohistochemistry 1:2,000 to 1:10,000. Epitope retrieval with citrate buffer pH6.0 is recommended for FFPE tissue sections.

**ADDITIONAL INFO** <https://www.bethyl.com/product/A301-336A-T>

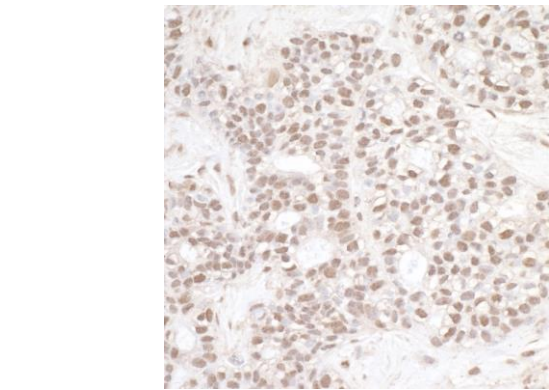
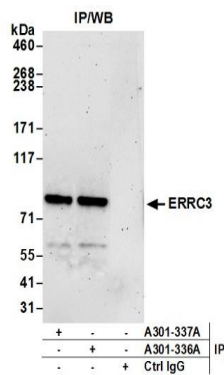
Use the link above to view SDS, a current list of citations, and other product specific information.

IP-western blot protocol: [https://www.bethyl.com/content/protocol\\_IP\\_WB](https://www.bethyl.com/content/protocol_IP_WB)

This document certifies that this product has met all of the quality control standards defined by Bethyl Laboratories, Inc.

Michael Spencer, PhD

Date: June 6, 2022



**Detection of human ERCC3 by western blot of immunoprecipitates.** *Samples:* Whole cell lysate (1.0 mg per IP reaction; 20% of IP loaded) from HEK293T cells prepared using NETN lysis buffer. *Antibodies:* Affinity purified rabbit anti-ERCC3 antibody A301-336A (lot A301-336A-2) used for IP at 3 µg per reaction. ERCC3 was also immunoprecipitated by rabbit anti-ERCC3 antibody A301-337A. For blotting immunoprecipitated ERCC3, A301-337A was used at 1 µg/ml. *Detection:* Chemiluminescence with an exposure time of 3 minutes.

**Detection of human ERCC3 by immunohistochemistry.** *Sample:* FFPE section of human breast carcinoma. *Antibody:* Affinity purified rabbit anti-ERCC3 (Cat. No. A301-336A Lot 2) used at a dilution of 1:10,000 (0.1 µg/ml). *Detection:* DAB