

PolH Antibody

Rabbit Polyclonal

Antigen Affinity Purified

Protein ID NP_006493.1

Catalog No. A301-231A-T

GeneID 5429

Lot No. A301-231A-T-3

APPLICATIONS	WB, IP
SPECIES REACTIVITY	Human
PRESUMED REACTIVITY	Based on 100% sequence identity, this antibody is predicted to react with Mouse
AMOUNT	10 µl
CONCENTRATION	200 µg/ml
STORAGE/SHELF LIFE	2 – 8°C / 1 year from date of receipt
PHYSICAL STATE	Liquid
BUFFER	Tris-buffered Saline containing 0.1% BSA and 0.09% Sodium Azide
ISOTYPE	IgG
ORIGIN	USA
PRODUCTION PROCEDURES	Antibody was affinity purified using an epitope specific to PolH immobilized on solid support.

The epitope recognized by A301-231A-T maps to a region between residue 690 and 713 of human polymerase (DNA directed), eta using the numbering given in entry NP_006493.1 (GeneID 5429).

APPLICATIONS Centrifuge tube to remove product from lid. Optimal working dilutions should be determined experimentally by the investigator. Prepare working dilution immediately before use.

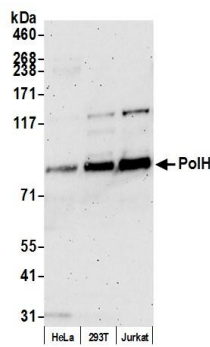
Western Blot 1:2,000 – 1:10,000

Immunoprecipitation 2 – 10 µg/mg lysate

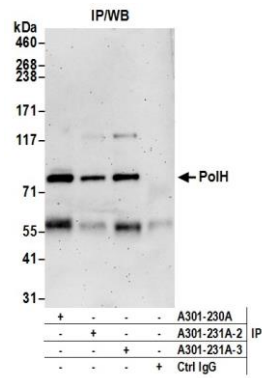
ADDITIONAL INFO <https://www.bethyl.com/product/A301-231A-T>

Use the link above to view SDS, a current list of citations, and other product specific information. IP-western blot protocol: https://www.bethyl.com/content/protocol_IP_WB

This document certifies that this product has met all of the quality control standards defined by Bethyl Laboratories, Inc.
Michael Spencer, PhD Date: June 6, 2022



Detection of human PolH by western blot. *Samples:* Whole cell lysate (50 µg) from HeLa, HEK293T, and Jurkat cells prepared using NETN lysis buffer. *Antibody:* Affinity purified Rabbit anti-PolH antibody A301-231A (lot A301-231A-3) used for WB at 0.1 µg/ml. *Detection:* Chemiluminescence with an exposure time of 3 minutes.



Detection of human PolH by western blot of immunoprecipitates. *Samples:* Whole cell lysate (1.0 mg per IP reaction; 20% of IP loaded) from HeLa cells prepared using NETN lysis buffer. *Antibodies:* Affinity purified Rabbit anti-PolH antibody A301-231A (lot A301-231A-3) used for IP at 6 µg per reaction. PolH was also immunoprecipitated by a previous lot of this antibody (lot A301-231A-2) and rabbit anti-PolH antibody A301-230A. For blotting immunoprecipitated PolH, A301-231A was used at 0.1 µg/ml. Chemiluminescence with an exposure time of 3 minutes.