

AKAP8/AKAP95 Antibody

Rabbit Polyclonal

Antigen Affinity Purified	Protein ID	NP_005849.1
Catalog No. A301-062A-T	GeneID	10270
Lot No. A301-062A-T-1		

APPLICATIONS	WB, IP, IHC
SPECIES REACTIVITY	Human, Mouse
AMOUNT	10 µl
CONCENTRATION	200 µg/ml
STORAGE/SHELF LIFE	2 – 8°C / 1 year from date of receipt
PHYSICAL STATE	Liquid
BUFFER	Tris-buffered Saline containing 0.1% BSA and 0.09% Sodium Azide
ISOTYPE	IgG
ORIGIN	USA
PRODUCTION PROCEDURES	Antibody was affinity purified using an epitope specific to AKAP8/AKAP95 immobilized on solid support.

The epitope recognized by A301-062A-T maps to a region between residue 642 and the C-terminus (residue 692) of human A-kinase anchor protein 8 using the numbering given in entry NP_005849.1 (GeneID 10270).

APPLICATIONS Centrifuge tube to remove product from lid. Optimal working dilutions should be determined experimentally by the investigator. Prepare working dilution immediately before use.

Western Blot 1:2,000 – 1:10,000

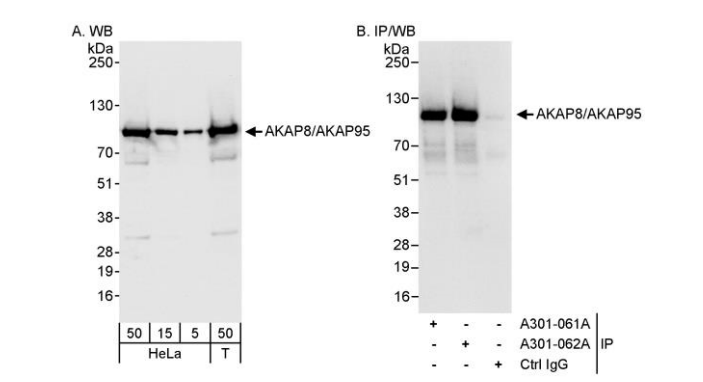
Immunoprecipitation 2 – 5 µg/mg lysate

Immunohistochemistry 1:200 – 1:1,000. Epitope retrieval with citrate buffer pH 6.0 is recommended for FFPE tissue sections.

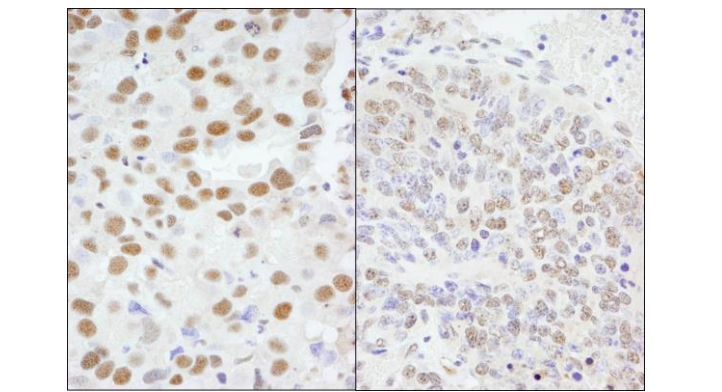
ADDITIONAL INFO <https://www.bethyl.com/product/A301-062A-T>

Use the link above to view SDS, a current list of citations, and other product specific information.
IP-western blot protocol: https://www.bethyl.com/content/protocol_IP_WB

This document certifies that this product has met all of the quality control standards defined by Bethyl Laboratories, Inc.
Michael Spencer, PhD Date: June 6, 2022



Detection of human AKAP8/AKAP95 by western blot and immunoprecipitation. *Samples:* Whole cell lysate from HeLa (5, 15 and 50 µg for WB; 1 mg for IP, 20% of IP loaded) and HEK293T (T; 50 µg) cells. *Antibodies:* Affinity purified rabbit anti-AKAP8/AKAP95 antibody A301-062A used for WB at 0.04 µg/ml (A) and 1 µg/ml (B) and used for IP at 3 µg/mg lysate. AKAP8/AKAP95 was also immunoprecipitated by rabbit anti-AKAP8/AKAP95 antibody A301-061A, which recognizes an upstream epitope. *Detection:* Chemiluminescence with exposure times of 3 seconds (A and B).



Detection of human and mouse AKAP8/AKAP95 by immunohistochemistry. *Sample:* FFPE section of human breast carcinoma (left) and mouse teratoma (right). *Antibody:* Affinity purified rabbit anti-AKAP8/AKAP95 (Cat. No. A301-062A) used at a dilution of 1:1,000 (0.2µg/ml) and 1:200 (1µg/ml). *Detection:* DAB