

CBX3 Antibody

Rabbit Polyclonal

Antigen Affinity Purified

Protein ID NP_009207.2

Catalog No. A300-984A-T

GeneID 11335

Lot No. A300-984A-T-1

APPLICATIONS	IP, IHC
SPECIES REACTIVITY	Human, Mouse
PRESUMED REACTIVITY	Based on 100% sequence identity, this antibody is predicted to react with Orangutan
AMOUNT	10 µl
CONCENTRATION	1000 µg/ml
STORAGE/SHELF LIFE	2 – 8°C / 1 year from date of receipt
PHYSICAL STATE	Liquid
BUFFER	Tris-citrate/phosphate buffer, pH 7 to 8 containing 0.09% Sodium Azide
ISOTYPE	IgG
ORIGIN	USA
PRODUCTION PROCEDURES	Antibody was affinity purified using an epitope specific to CBX3 immobilized on solid support.

The epitope recognized by A300-984A-T maps to a region between residue 133 and the C-terminus (residue 183) of human chromobox homolog 3 using the numbering given in entry NP_009207.2 (GeneID 11335).

Immunoglobulin concentration was determined by extinction coefficient: absorbance at 280 nm of 1.4 equals 1.0 mg of IgG.

APPLICATIONS Centrifuge tube to remove product from lid. Optimal working dilutions should be determined experimentally by the investigator. Prepare working dilution immediately before use.

Western Blot Not recommended

Immunoprecipitation 2 – 5 µg/mg lysate

Immunohistochemistry 1:2,000 – 10,000. Epitope retrieval with citrate buffer pH 6.0 is recommended for FFPE tissue sections.

ADDITIONAL INFO <https://www.bethyl.com/product/A300-984A-T>

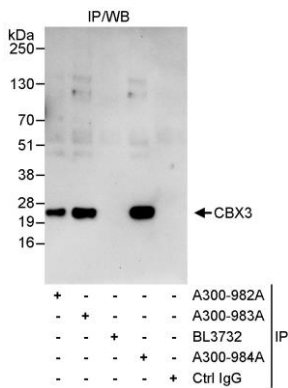
Use the link above to view SDS, a current list of citations, and other product specific information.

IP-western blot protocol: https://www.bethyl.com/content/protocol_IP_WB

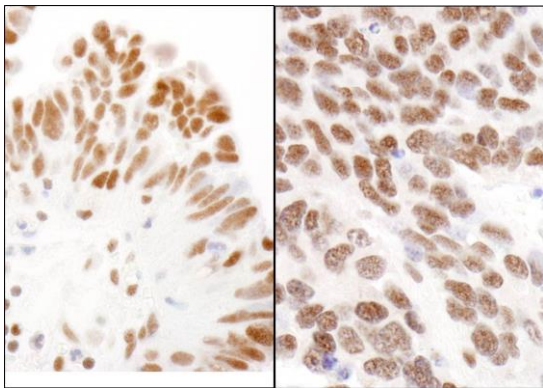
This document certifies that this product has met all of the quality control standards defined by Bethyl Laboratories, Inc.

Michael Spencer, PhD

Date: June 6, 2022



Detection of human CBX3 by western blot of immunoprecipitates. *Samples:* Whole cell lysate (1 mg for IP, 20% of IP loaded) from HeLa cells. *Antibodies:* Affinity purified rabbit anti-CBX3 antibody A300-984A used for IP at 3 µg/mg lysate. CBX3 was also immunoprecipitated by rabbit anti-CBX3 antibodies A300-982A and A300-983A, which recognize upstream epitopes. For blotting immunoprecipitated CBX3, A300-983A was used at 1 µg/ml. *Detection:* Chemiluminescence with an exposure time of 30 seconds.



Detection of human and mouse CBX3 by immunohistochemistry. *Sample:* FFPE section of human ovarian carcinoma (left) and mouse teratoma (right). *Antibody:* Affinity purified rabbit anti-CBX3 (Cat. No. A300-984A Lot1) used at a dilution of 1:5,000 (0.2µg/ml). *Detection:* DAB