

USP10 Antibody

Rabbit Polyclonal

Antigen Affinity Purified

Protein ID NP_005144.1

Catalog No. A300-901A-T

GeneID 9100

Lot No. A300-901A-T-1

APPLICATIONS WB, IP, IHC

SPECIES REACTIVITY Human

AMOUNT 10 µl

CONCENTRATION 200 µg/ml

STORAGE/SHELF LIFE 2 – 8°C / 1 year from date of receipt

PHYSICAL STATE Liquid

BUFFER Tris-buffered Saline containing 0.1% BSA and 0.09% Sodium Azide

ISOTYPE IgG

ORIGIN USA

PRODUCTION PROCEDURES Antibody was affinity purified using an epitope specific to USP10 immobilized on solid support.

The epitope recognized by A300-901A-T maps to a region between residue 300 and 3500 of human Ubiquitin Specific Peptidase 10 using the numbering given in entry NP_005144.1 (GeneID 9100).

APPLICATIONS Centrifuge tube to remove product from lid. Optimal working dilutions should be determined experimentally by the investigator. Prepare working dilution immediately before use.

Western Blot 1:2,000 – 1:10,000

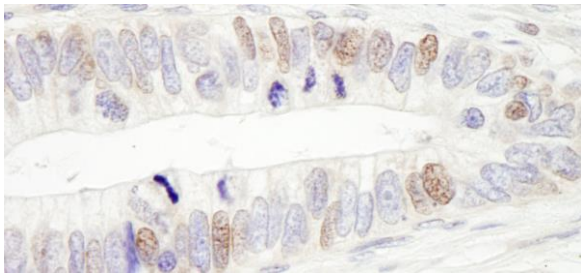
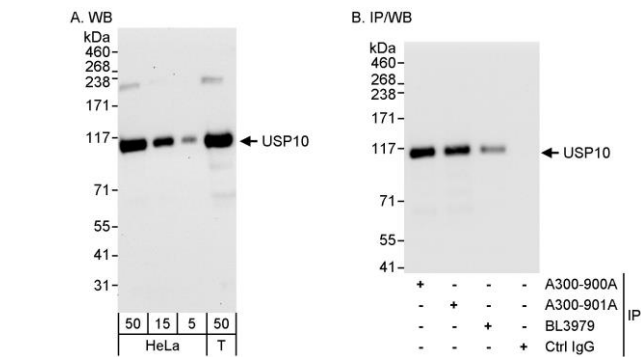
Immunoprecipitation 2 – 5 µg/mg lysate

Immunohistochemistry 1:200 – 1:1,000. Epitope retrieval with citrate buffer pH 6.0 is recommended for FFPE tissue sections.

ADDITIONAL INFO <https://www.bethyl.com/product/A300-901A-T>

Use the link above to view SDS, a current list of citations, and other product specific information. IP-western blot protocol: https://www.bethyl.com/content/protocol_IP_WB

This document certifies that this product has met all of the quality control standards defined by Bethyl Laboratories, Inc.
Michael Spencer, PhD Date: June 6, 2022



Detection of human USP10 by western blot and immunoprecipitation. *Samples:* Whole cell lysate from HeLa (5, 15 and 50 µg for WB; 1 mg for IP, 20% of IP loaded) and HEK293T (T; 50 µg) cells. *Antibodies:* Affinity purified rabbit anti-USP10 antibody A300-901A used for WB at 0.04 µg/ml (A) and 1 µg/ml (B) and used for IP at 3 µg/mg lysate (B). USP10 was also immunoprecipitated by rabbit anti-USP10 antibodies A300-900A and BL3979, which recognize other epitopes. *Detection:* Chemiluminescence with exposure times of 30 seconds (A) and 1 second (B).

Detection of human USP10 by immunohistochemistry. *Sample:* FFPE section of human colon carcinoma. *Antibody:* Affinity purified rabbit anti-USP10 (Cat. No. A300-901A Lot1) used at a dilution of 1:200 (1µg/ml). *Detection:* DAB