

PPM1B Antibody

Rabbit Polyclonal

Antigen Affinity Purified

Protein ID NP_002697.1

Catalog No. A300-887A-T

GeneID 5495

Lot No. A300-887A-T-2

APPLICATIONS WB, IP

SPECIES REACTIVITY Human

AMOUNT 10 µl

CONCENTRATION 200 µg/ml

STORAGE/SHELF LIFE 2 – 8°C / 1 year from date of receipt

PHYSICAL STATE Liquid

BUFFER Tris-buffered Saline containing 0.1% BSA and 0.09% Sodium Azide

ISOTYPE IgG

ORIGIN USA

PRODUCTION PROCEDURES Antibody was affinity purified using an epitope specific to PPM1B immobilized on solid support.

The epitope recognized by A300-887A-T maps to a region between residue 450 and the C-terminus (residue 479) of human Protein Phosphatase 1B, Magnesium-Dependent, Beta Isoform using the numbering given in entry NP_002697.1 (GeneID 5495).

APPLICATIONS Centrifuge tube to remove product from lid. Optimal working dilutions should be determined experimentally by the investigator. Prepare working dilution immediately before use.

Western Blot 1:2,000 – 1:10,000

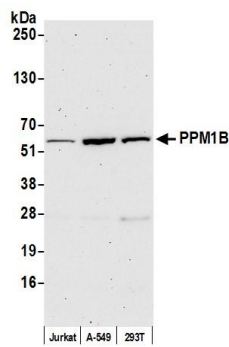
Immunoprecipitation 2 – 10 µg/mg lysate

ADDITIONAL INFO <https://www.bethyl.com/product/A300-887A-T>

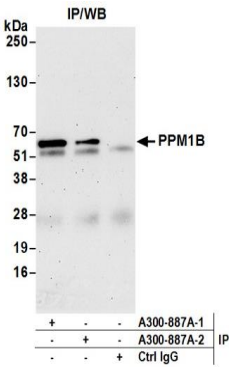
Use the link above to view SDS, a current list of citations, and other product specific information.

IP-western blot protocol: https://www.bethyl.com/content/protocol_IP_WB

This document certifies that this product has met all of the quality control standards defined by Bethyl Laboratories, Inc.
Michael Spencer, PhD Date: June 6, 2022



Detection of human PPM1B by western blot. *Samples:* Whole cell lysate (50 µg) from Jurkat, A-549, and HEK293T cells prepared using NETN lysis buffer. *Antibody:* Affinity purified rabbit anti-PPM1B antibody A300-887A (lot A300-887A-2) used for WB at 0.04 µg/ml. *Detection:* Chemiluminescence with an exposure time of 75 seconds.



Detection of human PPM1B by western blot of immunoprecipitates. *Samples:* Whole cell lysate (1.0 mg per IP reaction; 20% of IP loaded) from Jurkat cells prepared using NETN lysis buffer. *Antibodies:* Affinity purified rabbit anti-PPM1B antibody A300-887A (lot A300-887A-2) used for IP at 6 µg per reaction. PPM1B was also immunoprecipitated by a previous lot of this antibody (lot A300-887A-1). For blotting immunoprecipitated PPM1B, A300-887A was used at 0.04 µg/ml. *Detection:* Chemiluminescence with an exposure time of 75 seconds.