

# CBX8 Antibody

Rabbit Polyclonal

Antigen Affinity Purified Protein ID NP\_065700.1

Catalog No. A300-882A-T GeneID 57332

Lot No. A300-882A-T-2

<b>APPLICATIONS</b>	WB, IP, ChIP-Seq
<b>SPECIES REACTIVITY</b>	Human
<b>PRESUMED REACTIVITY</b>	Based on 100% sequence identity, this antibody is predicted to react with Mouse
<b>AMOUNT</b>	10 µl
<b>CONCENTRATION</b>	1000 µg/ml
<b>STORAGE/SHELF LIFE</b>	2 – 8°C / 1 year from date of receipt
<b>PHYSICAL STATE</b>	Liquid
<b>BUFFER</b>	Tris-citrate/phosphate buffer, pH 7 to 8 containing 0.09% Sodium Azide
<b>ISOTYPE</b>	IgG
<b>ORIGIN</b>	USA
<b>PRODUCTION PROCEDURES</b>	Antibody was affinity purified using an epitope specific to CBX8 immobilized on solid support.

The epitope recognized by A300-882A-T maps to a region between residue 350 and the C-terminus (residue 389) of human Chromobox homolog 8 using the numbering given in entry NP\_065700.1 (GeneID 57332).

**APPLICATIONS** Centrifuge tube to remove product from lid. Optimal working dilutions should be determined experimentally by the investigator. Prepare working dilution immediately before use.

Western Blot 1:2,000 – 1:10,000

Immunoprecipitation 2 – 10 µg/mg lysate

ChIP-Seq 1 – 2 µg

**ADDITIONAL INFO** <https://www.bethyl.com/product/A300-882A-T>

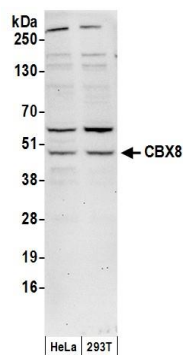
Use the link above to view SDS, a current list of citations, and other product specific information.

IP-western blot protocol: [https://www.bethyl.com/content/protocol\\_IP\\_WB](https://www.bethyl.com/content/protocol_IP_WB)

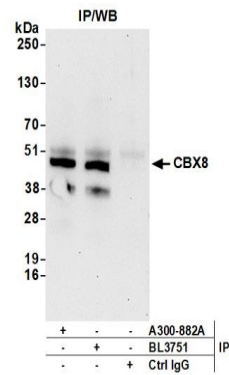
This document certifies that this product has met all of the quality control standards defined by Bethyl Laboratories, Inc.

Michael Spencer, PhD

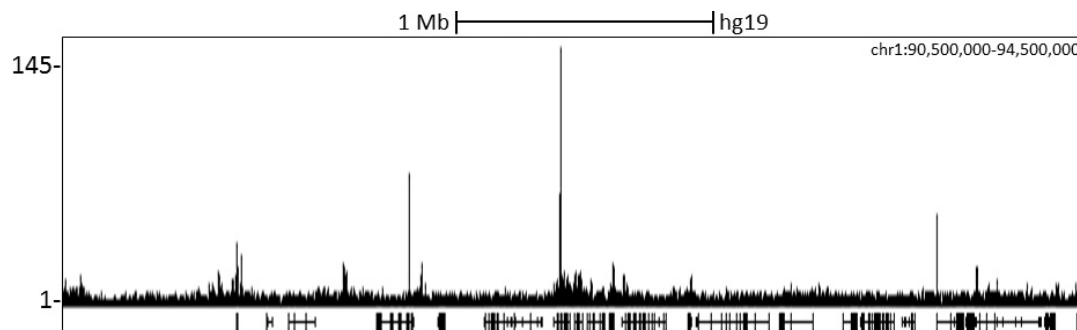
Date: June 6, 2022



**Detection of human CBX8 by western blot.** *Samples:* Whole cell lysate (50 µg) from HeLa and HEK293T cells prepared using NETN lysis buffer. *Antibody:* Affinity purified rabbit anti-CBX8 antibody A300-882A (lot A300-882A-2) used for WB at 0.1 µg/ml. *Detection:* Chemiluminescence with an exposure time of 30 seconds.



**Detection of human CBX8 by western blot of immunoprecipitates.** *Samples:* Whole cell lysate (0.5 or 1.0 mg per IP reaction; 20% of IP loaded) from HeLa cells prepared using NETN lysis buffer. *Antibodies:* Affinity purified rabbit anti-CBX8 antibody A300-882A (lot A300-882A-2) used for IP at 6 µg per reaction. CBX8 was also immunoprecipitated by rabbit anti-CBX8 antibody BL3751. For blotting immunoprecipitated CBX8, A300-882A was used at 0.4 µg/ml. *Detection:* Chemiluminescence with an exposure time of 30 seconds.



**Localization of CBX8 Binding Sites by ChIP-sequencing.** Chromatin from K562 cells was immunoprecipitated with anti-CBX8 antibody A300-882A and analyzed by DNA sequencing. The figure illustrates the peak distribution of CBX8 binding within a 4 Mb region of chromosome 1 as detected using anti-CBX8 antibody A300-882A. ChIP-seq validation performed by Diogenode, Denville, NJ.