

HDAC1 Antibody

Rabbit Polyclonal

Antigen Affinity Purified

Protein ID NP_004955.2

Catalog No. A300-713A-T

GeneID 3065

Lot No. A300-713A-T-1

APPLICATIONS	WB, IP, IHC
SPECIES REACTIVITY	Human, Mouse
PRESUMED REACTIVITY	Based on 100% sequence identity, this antibody is predicted to react with Bovine and Orangutan
AMOUNT	10 µl
CONCENTRATION	200 µg/ml
STORAGE/SHELF LIFE	2 – 8°C / 1 year from date of receipt
PHYSICAL STATE	Liquid
BUFFER	Tris-buffered Saline containing 0.1% BSA and 0.09% Sodium Azide
ISOTYPE	IgG
ORIGIN	USA
PRODUCTION PROCEDURES	Antibody was affinity purified using an epitope specific to HDAC1 immobilized on solid support.

The epitope recognized by A300-713A-T maps to region between residue 425 and the C-terminus (residue 482) of human Histone Deacetylase 1 using the numbering given in entry NP_004955.2 (GeneID 3065).

APPLICATIONS Centrifuge tube to remove product from lid. Optimal working dilutions should be determined experimentally by the investigator. Prepare working dilution immediately before use.

Western Blot 1:2,000 – 1:10,000

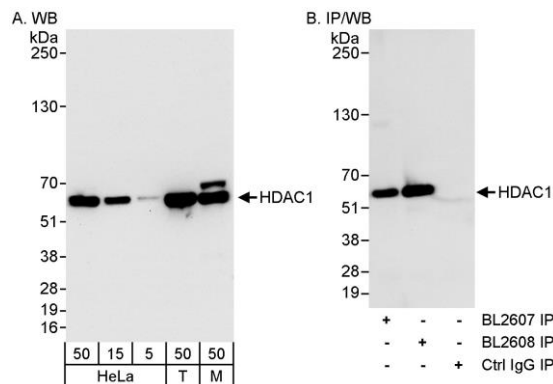
Immunoprecipitation 2 – 5 µg/mg lysate

Immunohistochemistry 1:200 – 1:1,000. Epitope retrieval with citrate buffer pH 6.0 is recommended for FFPE tissue sections.

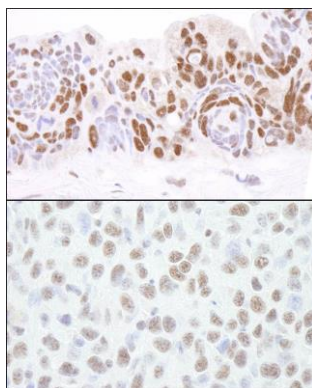
ADDITIONAL INFO <https://www.bethyl.com/product/A300-713A-T>

Use the link above to view SDS, a current list of citations, and other product specific information.
IP-western blot protocol: https://www.bethyl.com/content/protocol_IP_WB

This document certifies that this product has met all of the quality control standards defined by Bethyl Laboratories, Inc.
Michael Spencer, PhD Date: June 6, 2022



Detection of human and mouse HDAC1 by western blot (h&m) and immunoprecipitation (h). *Samples:* Whole cell lysate from HeLa (5, 15 and 50 μ g for WB; 1 mg for IP, 20% of IP loaded), HEK293T (T; 50 μ g), and mouse NIH 3T3 (M; 50 μ g) cells. *Antibodies:* Affinity purified rabbit anti-HDAC1 antibody BL2608 (Cat. No. A300-713A) used for WB at 0.04 μ g/ml (A) and 1 μ g/ml (B) and used for IP at 3 μ g/mg lysate (B). HDAC1 was also immunoprecipitated using rabbit anti-HDAC1 antibody BL2607 (Cat. No. A300-712A) at 3 μ g/mg lysate. *Detection:* Chemiluminescence with exposure times of 30 seconds (A) and 10 seconds (B).



Detection of human and mouse HDAC1 by immunohistochemistry. *Sample:* FFPE section of human ovarian carcinoma (top) and mouse squamous cell carcinoma (bottom). *Antibody:* Affinity purified rabbit anti-HDAC1 (Cat. No. A300-713A Lot1) used at a dilution of 1:200 (1 μ g/ml) and 1:1,000 (0.2 μ g/ml). *Detection:* DAB