

BLM Antibody

Rabbit Polyclonal

Antigen Affinity Purified

Protein ID NP_031576.2

Catalog No. A300-572A-T

GenelD 12144

Lot No. A300-572A-T-2

APPLICATIONS	WB, IP
SPECIES REACTIVITY	Human, Mouse
AMOUNT	10 µl
CONCENTRATION	200 µg/ml
STORAGE/SHELF LIFE	2 – 8°C / 1 year from date of receipt
PHYSICAL STATE	Liquid
BUFFER	Tris-buffered Saline containing 0.1% BSA and 0.09% Sodium Azide
ISOTYPE	IgG
ORIGIN	USA
PRODUCTION PROCEDURES	Antibody was affinity purified using an epitope specific to Blm immobilized on solid support.

The epitope recognized by A300-572A-T maps to a region between residue 1375 and the C-terminus (residue 1416) of mouse Bloom Syndrome Homolog using the numbering given in entry NP_031576.2 (GenelD 12144).

APPLICATIONS Centrifuge tube to remove product from lid. Optimal working dilutions should be determined experimentally by the investigator. Prepare working dilution immediately before use.

Western Blot 1:2,000 – 1:10,000

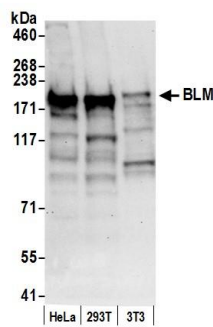
Immunoprecipitation 2 – 10 µg/mg lysate

ADDITIONAL INFO <https://www.bethyl.com/product/A300-572A-T>

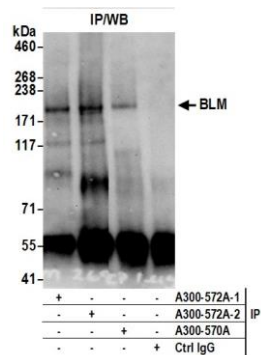
Use the link above to view SDS, a current list of citations, and other product specific information.

IP-western blot protocol: https://www.bethyl.com/content/protocol_IP_WB

This document certifies that this product has met all of the quality control standards defined by Bethyl Laboratories, Inc.
Michael Spencer, PhD Date: June 6, 2022



Detection of human and mouse BLM by western blot.
Samples: Whole cell lysate (50 µg) from HeLa, HEK293T, and mouse NIH 3T3 cells prepared using NETN lysis buffer.
Antibody: Affinity purified rabbit anti-BLM antibody A300-572A (lot A300-572A-2) used for WB at 0.1 µg/ml.
Detection: Chemiluminescence with an exposure time of 30 seconds.



Detection of mouse BLM by western blot of immunoprecipitates. *Samples:* Whole cell lysate (0.5 or 1.0 mg per IP reaction; 20% of IP loaded) from NIH 3T3 cells prepared using NETN lysis buffer. *Antibodies:* Affinity purified rabbit anti-BLM antibody A300-572A (lot A300-572A-2) used for IP at 6 µg per reaction. BLM was also immunoprecipitated by a previous lot of this antibody (lot A300-572A-1) and rabbit anti-BLM antibody A300-570A For blotting immunoprecipitated BLM, A300-572A was used at 1 µg/ml. *Detection:* Chemiluminescence with an exposure time of 30 seconds.