

p70S6K Antibody

Rabbit Polyclonal

Antigen Affinity Purified

Protein ID NP_003152.1

Catalog No. A300-510A-T

GeneID 6198

Lot No. A300-510A-T-2

APPLICATIONS	WB
SPECIES REACTIVITY	Human, Mouse
PRESUMED REACTIVITY	Based on 100% sequence identity, this antibody is predicted to react with Rat, Bovine and Rabbit
AMOUNT	10 µl
CONCENTRATION	1000 µg/ml
STORAGE/SHELF LIFE	2 – 8°C / 1 year from date of receipt
PHYSICAL STATE	Liquid
BUFFER	Tris-citrate/phosphate buffer, pH 7 to 8 containing 0.09% Sodium Azide
ISOTYPE	IgG
ORIGIN	USA
PRODUCTION PROCEDURES	Antibody was affinity purified using an epitope specific to p70S6 immobilized on solid support.

The epitope recognized by A300-510A-T maps to a region between residue 475 and the C-terminus (residue 525) of human Ribosomal Protein S6 Kinase, 70 kDa, polypeptide 1 using the numbering given in entry NP_003152.1 (GeneID 6198).

Immunoglobulin concentration was determined by extinction coefficient: absorbance at 280 nm of 1.4 equals 1.0 mg of IgG.

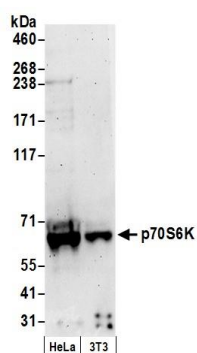
APPLICATIONS Centrifuge tube to remove product from lid. Optimal working dilutions should be determined experimentally by the investigator. Prepare working dilution immediately before use.

Western Blot 1:2,500 – 1:20,000

ADDITIONAL INFO <https://www.bethyl.com/product/A300-510A-T>

Use the link above to view SDS, a current list of citations, and other product specific information.

This document certifies that this product has met all of the quality control standards defined by Bethyl Laboratories, Inc.
Michael Spencer, PhD Date: June 6, 2022

**Detection of human and mouse p70S6K by western blot.**

Samples: Whole cell lysate (50 µg) from HeLa and mouse NIH 3T3 cells prepared using NETN lysis buffer. *Antibody:* Affinity purified rabbit anti-p70S6K antibody A300-510A (lot A300-510A-2) used for WB at 0.05 µg/ml. *Detection:* Chemiluminescence with an exposure time of 3 minutes.