

# Estrogen Receptor Alpha Antibody

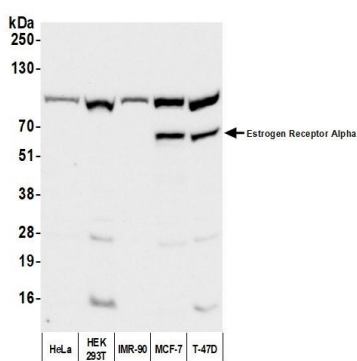
Rabbit Polyclonal

Antigen Affinity Purified	RefSeq ID	NP_000116.2
Catalog No. A300-498A	Uniprot ID	P03372
Lot No. 4	GeneID	2099

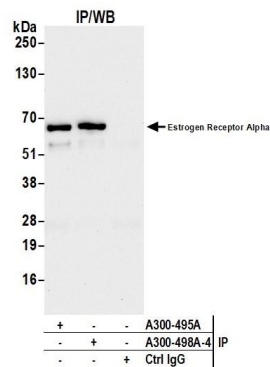
APPLICATIONS	WB, IP				
SPECIES REACTIVITY	Human				
AMOUNT	100 µl				
CONCENTRATION	1000 µg/ml				
STORAGE/SHELF LIFE	2 – 8°C / 1 year from date of receipt				
PHYSICAL STATE	Liquid				
BUFFER	Tris-citrate/phosphate buffer, pH 7 to 8 containing 0.09% Sodium Azide				
ISOTYPE	IgG				
ORIGIN	USA				
PRODUCTION PROCEDURES	<p>Antibody was affinity purified using an epitope specific to Estrogen Receptor Alpha immobilized on solid support.</p> <p>The epitope recognized by A300-498A maps to a region between residue 550 and the C-terminus (residue 595) of human Estrogen Receptor Alpha using the numbering given in SwissProt entry P03372 (GeneID 2099).</p> <p>Immunoglobulin concentration was determined using Beer's Law where 1mg/mL IgG has an A280 of 1.4.</p>				
APPLICATIONS	<p>Centrifuge tube to remove product from lid. Optimal working dilutions should be determined experimentally by the investigator. Prepare working dilution immediately before use.</p> <table><tr><td>Western Blot</td><td>1:2000 – 1:10,000</td></tr><tr><td>Immunoprecipitation</td><td>6 µg/mg lysate</td></tr></table>	Western Blot	1:2000 – 1:10,000	Immunoprecipitation	6 µg/mg lysate
Western Blot	1:2000 – 1:10,000				
Immunoprecipitation	6 µg/mg lysate				
ADDITIONAL INFO	<p><a href="https://www.fortislife.com/p/A300-498A">https://www.fortislife.com/p/A300-498A</a></p> <p>Use the link above to view SDS, a current list of citations, and other product specific information.</p>				

This document certifies that this product has met all of the quality control standards defined by Bethyl Laboratories, Inc.  
Michael Spencer, PhD

Date: June 7, 2024



**Detection of human Estrogen Receptor Alpha by western blot.** *Samples:* Whole cell lysate (50 µg) from HeLa, HEK293T, IMR-90, MCF-7, and T-47D cells prepared using NETN lysis buffer. *Antibody:* Affinity purified rabbit anti-Estrogen Receptor Alpha antibody (A300-498A lot 4) used for WB at 0.4 µg/ml. *Detection:* Chemiluminescence with an exposure time of 30 seconds.



**Detection of human Estrogen Receptor Alpha by western blot of immunoprecipitates.** *Samples:* Whole cell lysate (1.0 mg per IP reaction; 20% of IP loaded) from MCF-7 cells prepared using NETN lysis buffer. *Antibodies:* Affinity purified rabbit anti-Estrogen Receptor Alpha antibody (A300-498A lot 4) used for IP at 6 µg per reaction. Estrogen Receptor Alpha was also immunoprecipitated by Estrogen Receptor Alpha (A300-495A). For blotting immunoprecipitated Estrogen Receptor Alpha, A300-498A was used at 0.4 µg/ml. *Detection:* Chemiluminescence with an exposure time of 75 seconds.