

DDB1 Antibody

Rabbit Polyclonal

Antigen Affinity Purified

Protein ID Q13289

Catalog No. A300-462A-T

GeneID 1642

Lot No. A300-462A-T-3

APPLICATIONS	WB, IP, IHC
SPECIES REACTIVITY	Human, Mouse
PRESUMED REACTIVITY	Based on 100% sequence identity, this antibody is predicted to react with Rat, X. laevis, Bovine and Orangutan
AMOUNT	10 µl
CONCENTRATION	200 µg/ml
STORAGE/SHELF LIFE	2 – 8°C / 1 year from date of receipt
PHYSICAL STATE	Liquid
BUFFER	Tris-buffered Saline containing 0.1% BSA and 0.09% Sodium Azide
ISOTYPE	IgG
ORIGIN	USA
PRODUCTION PROCEDURES	Antibody was affinity purified using an epitope specific to DDB1 immobilized on solid support.

The epitope recognized by A300-462A-T maps to a region between residue 1100 and the C-terminus (residue 1140) of human damage-specific DNA binding protein 1 using the numbering given in TrEMBL entry Q13289 (GeneID 1642).

APPLICATIONS Centrifuge tube to remove product from lid. Optimal working dilutions should be determined experimentally by the investigator. Prepare working dilution immediately before use.

Western Blot 1:2,000 – 1:10,000

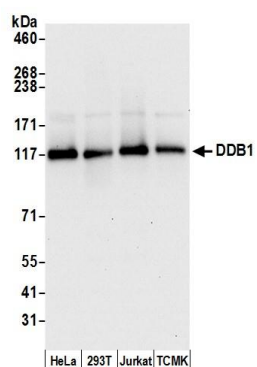
Immunoprecipitation 2 – 5 µg/mg lysate

Immunohistochemistry 1:500 – 1:2,000. Epitope retrieval with citrate buffer pH 6.0 is recommended for FFPE tissue sections.

ADDITIONAL INFO <https://www.bethyl.com/product/A300-462A-T>

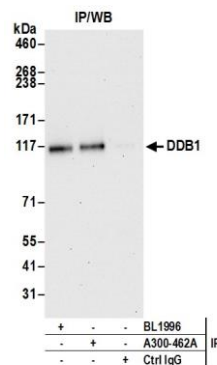
Use the link above to view SDS, a current list of citations, and other product specific information.
IP-western blot protocol: https://www.bethyl.com/content/protocol_IP_WB

This document certifies that this product has met all of the quality control standards defined by Bethyl Laboratories, Inc.
Michael Spencer, PhD Date: June 6, 2022



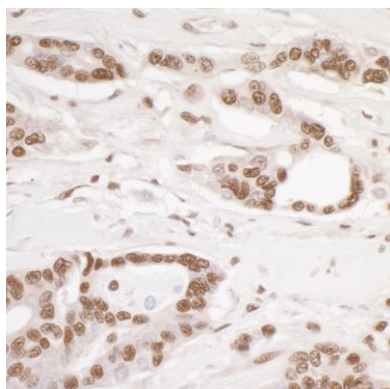
Detection of human and mouse DDB1 by western blot.

Samples: Whole cell lysate (15 µg) from HeLa, HEK293T, Jurkat, and mouse TCMK-1 cells prepared using NETN lysis buffer. **Antibody:** Affinity purified rabbit anti-DDB1 antibody A300-462A (lot A300-462A-3) used for WB at 0.1 µg/ml. **Detection:** Chemiluminescence with an exposure time of 10 seconds.



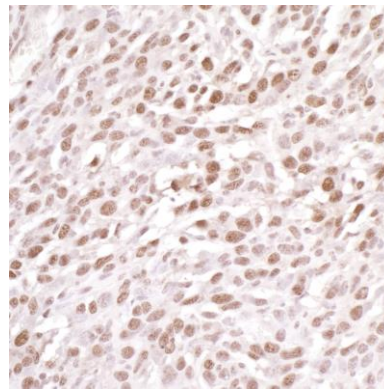
Detection of human DDB1 by western blot of immunoprecipitates.

Samples: Whole cell lysate (1.0 mg per IP reaction; 20% of IP loaded) from HeLa cells prepared using NETN lysis buffer. **Antibodies:** Affinity purified rabbit anti-DDB1 antibody A300-462A (lot A300-462A-3) used for IP at 3 µg per reaction. DDB1 was also immunoprecipitated by rabbit anti-DDB1 antibody BL1996. For blotting immunoprecipitated DDB1, A300-462A was used at 0.4 µg/ml. **Detection:** Chemiluminescence with an exposure time of 30 seconds.



Detection of human DDB1 by immunohistochemistry.

Sample: FFPE section of human ovarian carcinoma. **Antibody:** Affinity purified rabbit anti-DDB1 (Cat. No. A300-462A Lot3) used at a dilution of 1:1,000 (0.2 µg/ml). **Detection:** DAB



Detection of mouse DDB1 by immunohistochemistry.

Sample: FFPE section of mouse CT26 colon carcinoma. **Antibody:** Affinity purified rabbit anti-DDB1 (Cat. No. A300-462A Lot3) used at a dilution of 1:1,000 (0.2 µg/ml). **Detection:** DAB