

hSET1 Antibody

Rabbit Polyclonal

Antigen Affinity Purified	RefSeq ID	NP_055527.1
Catalog No. A300-289A-T	Uniprot ID	O15047
Lot No. 8	GeneID	9739

APPLICATIONS	WB, IP, IHC
SPECIES REACTIVITY	Human
AMOUNT	10 µl
CONCENTRATION	1000 µg/ml
STORAGE/SHELF LIFE	2 – 8°C / 1 year from date of receipt
PHYSICAL STATE	Liquid
BUFFER	Tris-citrate/phosphate buffer, pH 7 to 8 containing 0.09% Sodium Azide
ISOTYPE	IgG
ORIGIN	USA
PRODUCTION PROCEDURES	Antibody was affinity purified using an epitope specific to hSET1 immobilized on solid support.

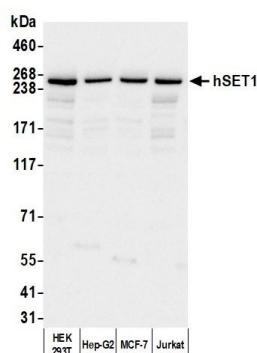
The epitope recognized by A300-289A-T maps to a region between residues 1200 and 1250 of human hSET1 (KIAA0339) using the numbering given in TrEMBL entry O15047 (GeneID 9739).

APPLICATIONS Centrifuge tube to remove product from lid. Optimal working dilutions should be determined experimentally by the investigator. Prepare working dilution immediately before use.

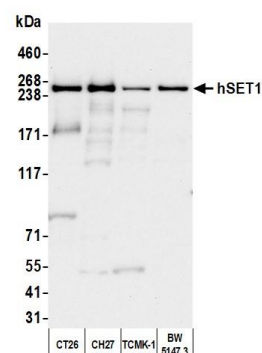
Western Blot	1:10,000 – 1:25,000
Immunoprecipitation	2 – 10 µg/mg lysate
Immunohistochemistry	1:100 to 1:500. Epitope retrieval with citrate buffer pH6.0 is recommended for FFPE tissue sections.

ADDITIONAL INFO <https://www.fortislif.com/p/A300-289A-T>
Use the link above to view SDS, a current list of citations, and other product specific information.

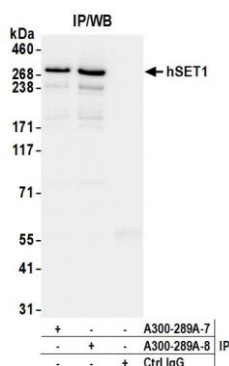
This document certifies that this product has met all of the quality control standards defined by Bethyl Laboratories, Inc.
Michael Spencer, PhD Date: April 17, 2023



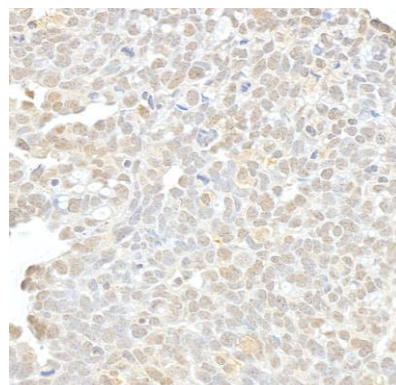
Detection of human hSET1 by western blot. *Samples:* Whole cell lysate (25 µg) from HEK293T, Hep-G2, MCF-7, and Jurkat cells prepared using NETN lysis buffer. *Antibody:* Affinity purified rabbit anti-hSET1 antibody (A300-289A lot 8) used for WB at 0.04 µg/ml. *Detection:* Chemiluminescence with an exposure time of 10 seconds.



Detection of mouse hSET1 by western blot. *Samples:* Whole cell lysate (25 µg) from CT26, CH27, TCMK-1, and BW5147.3 cells prepared using NETN lysis buffer. *Antibody:* Affinity purified rabbit anti-hSET1 antibody (A300-289A lot 8) used for WB at 0.04 µg/ml. *Detection:* Chemiluminescence with an exposure time of 30 seconds.



Detection of human hSET1 by western blot of immunoprecipitates. *Samples:* Whole cell lysate (1 mg for IP; 10% of IP loaded) from HEK293T cells prepared using NETN lysis buffer. *Antibodies:* Affinity purified rabbit anti-hSET1 antibody (A300-289A lot 8) used for IP at 6 µg per reaction. hSET1 was also immunoprecipitated by a previous lot of this antibody (A300-289A lot 7). For blotting immunoprecipitated hSET1, A300-289A was used at 0.1 µg/ml. *Detection:* Chemiluminescence with an exposure time of 3 seconds.



Detection of Human hSET1 by Immunohistochemistry. *Sample:* FFPE section of human ovarian carcinoma. *Antibody:* Affinity purified rabbit anti-hSET1 (Cat. No. A300-289A Lot 8) used at a dilution of 1:1,000 (1 µg/ml). *Detection:* DAB