

# Phospho MCM2 (S108) Antibody

Rabbit Polyclonal

Antigen Affinity Purified	RefSeq ID	NP_004517.2
Catalog No. A300-094A	Uniprot ID	P49736
Lot No. 5	GenelD	4171

<b>APPLICATIONS</b>	WB, IP, IHC
<b>SPECIES REACTIVITY</b>	Human, Mouse
<b>AMOUNT</b>	100 µl
<b>CONCENTRATION</b>	1000 µg/ml
<b>STORAGE/SHELF LIFE</b>	2 – 8°C / 1 year from date of receipt
<b>PHYSICAL STATE</b>	Liquid
<b>BUFFER</b>	Tris-citrate/phosphate buffer, pH 7 to 8 containing 0.09% Sodium Azide
<b>ISOTYPE</b>	IgG
<b>ORIGIN</b>	USA
<b>PRODUCTION PROCEDURES</b>	Antibody was affinity purified using a synthetic peptide representing phosphorylation at Serine 108 and surrounding residues of MCM2 immobilized on solid support.

Immunogen A300-094A was a synthetic phosphorylated peptide, which represented a portion of human Minichromosomal Maintenance Deficient 2 surrounding Serine 108 according to the numbering given in entry NP\_004517.2 (GenelD 4171).

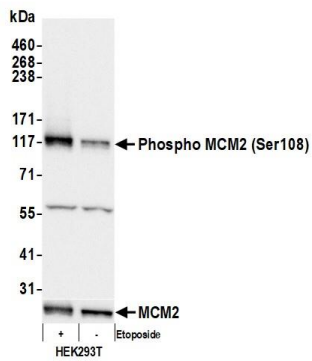
Immunoglobulin concentration was determined by extinction coefficient: absorbance at 280 nm of 1.4 equals 1.0 mg of IgG.

<b>APPLICATIONS</b>	Centrifuge tube to remove product from lid. Optimal working dilutions should be determined experimentally by the investigator. Prepare working dilution immediately before use.
	Western Blot 1:5,000 – 1:10,000
	Immunoprecipitation 2 – 10 µg/mg lysate
	Immunohistochemistry 1:1,000 to 1:5,000. Epitope retrieval with citrate buffer pH6.0 is recommended for FFPE tissue sections.

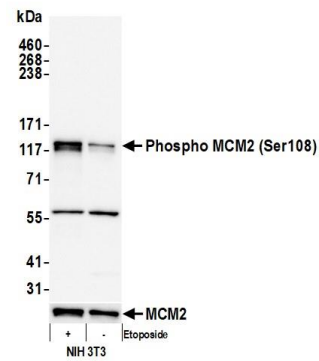
<b>IHC HUMAN CONTROLS</b>	Breast Carcinoma, Colon Carcinoma, Glioblastoma, Non-Small Cell Lung Cancer, Ovarian Carcinoma, Prostate Carcinoma, Skin Squamous Cell Carcinoma, Testicular Seminoma
<b>IHC MOUSE CONTROLS</b>	Plasmacytoma, Renal Cell Carcinoma, Teratoma

<b>ADDITIONAL INFO</b>	<a href="https://www.fortislifesciences.com/p/A300-094A">https://www.fortislifesciences.com/p/A300-094A</a> Use the link above to view SDS, a current list of citations, and other product specific information.
------------------------	---

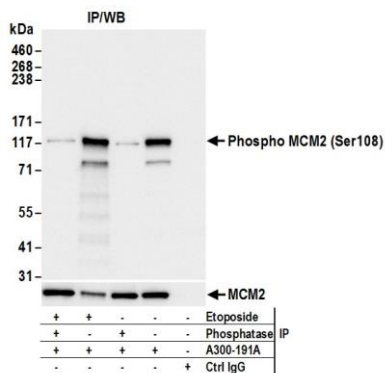
This document certifies that this product has met all of the quality control standards defined by Bethyl Laboratories, Inc.  
Michael Spencer, PhD Date: June 15, 2023



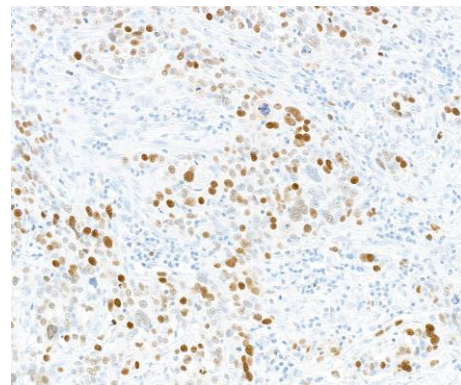
**Detection of human Phospho MCM2 (Ser108) by western blot.** *Samples:* Whole cell lysate (10 µg) from HEK293T cells treated with 100 µM etoposide (+) or mock treated (-). *Antibody:* Affinity purified rabbit anti-Phospho MCM2 (Ser108) antibody (A300-094A lot 5) used for WB at 0.1 µg/ml. *Detection:* Chemiluminescence with an exposure time of 1 second. Lower Panel: Rabbit anti-MCM2 antibody (A300-191A).



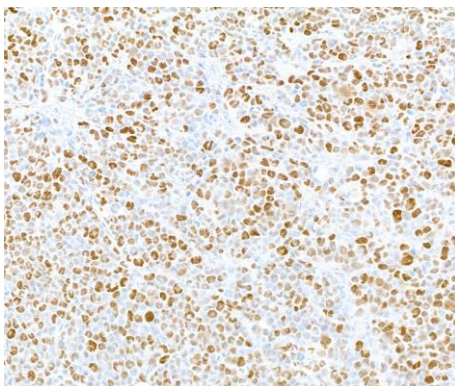
**Detection of mouse Phospho MCM2 (Ser108) by western blot.** *Samples:* Whole cell lysate (10 µg) from NIH 3T3 cells prepared using NETN lysis buffer. *Antibody:* Affinity purified rabbit anti-Phospho MCM2 (Ser108) antibody (A300-094A lot 5) used for WB at 1 µg/ml. *Detection:* Chemiluminescence with an exposure time of 3 seconds. Lower Panel: Rabbit anti-MCM2 antibody (A300-191A).



**Detection of human Phospho MCM2 (Ser108) by western blot of immunoprecipitates.** *Samples:* Whole cell lysate (1.0 mg per IP reaction; 20% of IP loaded) from HEK293T cells treated with etoposide (+) or mock treated (-). *Antibodies:* Affinity purified rabbit anti-MCM2 antibody (A300-191A) used for IP at 6 µg per reaction. Following immunoprecipitation, the IP reaction was treated with phosphatases (+) or mock treated (-). For blotting immunoprecipitated Phospho MCM2 (Ser108), A300-094A lot 5 was used at 0.1 µg/ml. *Detection:* Chemiluminescence with an exposure time of 1 second. Lower Panel: Rabbit anti-MCM2 antibody (A300-191A).



**Detection of human Phospho MCM2 (S108) by immunohistochemistry.** *Sample:* FFPE sections of human breast carcinoma. *Antibody:* Affinity purified rabbit anti-phospho MCM2 (S108) (Cat. No. A300-094A Lot5) used at a dilution of 1:5,000 (0.2µg/ml). *Detection:* DAB



**Detection of mouse Phospho MCM2 (S108) by immunohistochemistry.** *Sample:* FFPE sections of mouse plasmacytoma. *Antibody:* Affinity purified rabbit anti-phospho MCM2 (S108) (Cat. No. A300-094A Lot5) used at a dilution of 1:5,000 (0.2µg/ml). *Detection:* DAB