

CSN3 Antibody

Rabbit Polyclonal

Antigen Affinity Purified

Protein ID NP_003644.2

Catalog No. A300-029A-T

GeneID 8533

Lot No. A300-029A-T-1

APPLICATIONS	WB
SPECIES REACTIVITY	Human
PRESUMED REACTIVITY	Based on 100% sequence identity, this antibody is predicted to react with Mouse, Rat, Bovine and Orangutan
AMOUNT	10 µl
CONCENTRATION	1000 µg/ml
STORAGE/SHELF LIFE	2 – 8°C / 1 year from date of receipt
PHYSICAL STATE	Liquid
BUFFER	Tris-citrate/phosphate buffer, pH 7 to 8 containing 0.09% Sodium Azide
ISOTYPE	IgG
ORIGIN	USA
PRODUCTION PROCEDURES	Antibody was affinity purified using an epitope specific to CSN3 immobilized on solid support.

The epitope recognized by A300-029A-T maps to a region between residues 325 and 375 of human COP9 constitutive photomorphogenic homolog subunit 3 using the numbering given in entry NP_003644.2 (GeneID 8533).

Immunoglobulin concentration was determined by extinction coefficient: absorbance at 280 nm of 1.4 equals 1.0 mg of IgG.

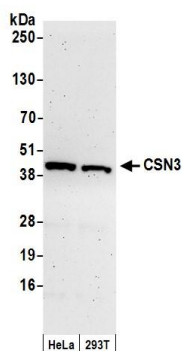
APPLICATIONS Centrifuge tube to remove product from lid. Optimal working dilutions should be determined experimentally by the investigator. Prepare working dilution immediately before use.

Western Blot 1:2,000 – 1:20,000

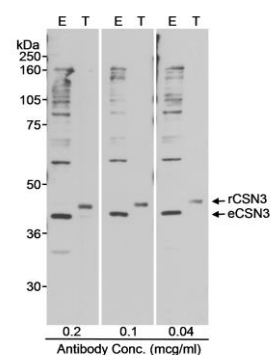
ADDITIONAL INFO <https://www.bethyl.com/product/A300-029A-T>

Use the link above to view SDS, a current list of citations, and other product specific information.

This document certifies that this product has met all of the quality control standards defined by Bethyl Laboratories, Inc.
Michael Spencer, PhD Date: June 6, 2022



Detection of human CSN3 by western blot. *Samples:* Whole cell lysate (50 μ g) from HeLa and HEK293T cells prepared using NETN lysis buffer. ***Antibodies:*** Affinity purified rabbit anti-CSN3 antibody A300-029A (lot A300-029A-1) used for WB at 0.05 μ g/ml. ***Detection:*** Chemiluminescence with an exposure time of 3 minutes.



Detection of human CSN3 by western blot. *Samples:* Whole cell lysate (50 μ g-E; 10 μ g-T) from mock transfected (E) or CSN3 transfected (T) HEK293T cells. ***Antibody:*** Affinity purified rabbit anti-CSN3 A300-029A used at the indicated concentration. ***Detection:*** Chemiluminescence with a 10 second exposure.