

CSN1 Antibody

Rabbit Polyclonal

Antigen Affinity Purified

Protein ID Q13098

Catalog No. A300-026A-T

GeneID 2873

Lot No. A300-026A-T-1

APPLICATIONS	WB, IHC
SPECIES REACTIVITY	Human
PRESUMED REACTIVITY	Based on 100% sequence identity, this antibody is predicted to react with Mouse and Rat
AMOUNT	10 µl
CONCENTRATION	1000 µg/ml
STORAGE/SHELF LIFE	2 – 8°C / 1 year from date of receipt
PHYSICAL STATE	Liquid
BUFFER	Tris-citrate/phosphate buffer, pH 7 to 8 containing 0.09% Sodium Azide
ISOTYPE	IgG
ORIGIN	USA
PRODUCTION PROCEDURES	Antibody was affinity purified using an epitope specific to CSN1 immobilized on solid support.

The epitope recognized by A300-026A-T maps to a region between residue 400 and the C-terminus (residue 471) of human G protein Pathway Suppressor 1 using the numbering given in Swiss-Prot entry Q13098 (GeneID 2873).

Immunoglobulin concentration was determined by extinction coefficient: absorbance at 280 nm of 1.4 equals 1.0 mg of IgG.

APPLICATIONS Centrifuge tube to remove product from lid. Optimal working dilutions should be determined experimentally by the investigator. Prepare working dilution immediately before use.

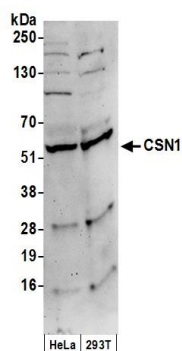
Western Blot 1:1,000 – 1:10,000

Immunohistochemistry 1:500 – 1:2,000. Epitope retrieval with citrate buffer pH 6.0 is recommended for FFPE tissue sections.

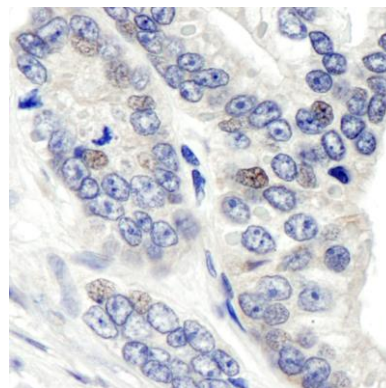
ADDITIONAL INFO <https://www.bethyl.com/product/A300-026A-T>

Use the link above to view SDS, a current list of citations, and other product specific information.

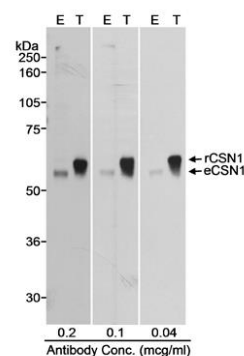
This document certifies that this product has met all of the quality control standards defined by Bethyl Laboratories, Inc.
Michael Spencer, PhD Date: June 6, 2022



Detection of human CSN1 by western blot. *Samples:* Whole cell lysate (50 µg) from HeLa and HEK293T cells prepared using NETN lysis buffer. *Antibodies:* Affinity purified rabbit anti-CSN1 antibody A300-026A (lot A300-026A-1) used for WB at 0.1 µg/ml. *Detection:* Chemiluminescence with an exposure time of 3 minutes.



Detection of human CSN1 by immunohistochemistry. *Sample:* FFPE section of human prostate carcinoma. *Antibody:* Affinity purified rabbit anti-CSN1 (Cat. No. A300-026A) used at a dilution of 1:1,000 (1 µg/ml). *Detection:* DAB



Detection of human CSN1 by western blot. *Samples:* Whole cell lysate (50 µg-E; 10 µg-T) from mock transfected (E) or CSN1 transfected (T) HEKHEK293T cells. *Antibody:* Affinity purified rabbit anti-CSN1 A300-026A used at the indicated concentration. *Detection:* Chemiluminescence with a 10 second exposure.