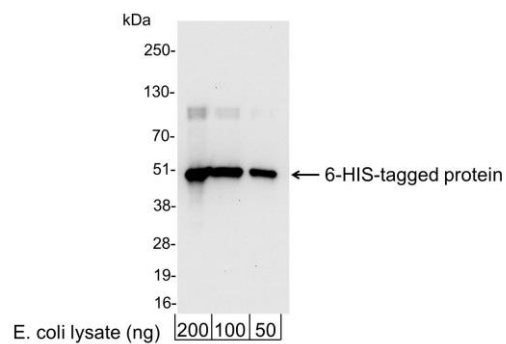


BETHYL | **FORTIS**
LABORATORIES, INC. | LIFE SCIENCES

This document certifies that this product has met all of the quality control standards defined by Bethyl Laboratories, Inc.
Michael Spencer, PhD Date: May 30, 2023

**Detection of 6-His-tagged Protein by western blot.**

Samples: 200, 100, or 50 ng of E. coli whole cell lysate expressing a multi-tag fusion protein. *Antibodies:* Affinity-purified, biotin-conjugated, rabbit anti-6-His antibody A190-114B used for WB at 0.04 µg/ml (1:25,000).

Detection: Streptavidin-HRP (0.1 µg/ml) and chemiluminescence with an exposure time of 10 seconds.