

Myc Tag Antibody

Rabbit Polyclonal

Antigen Affinity Purified

Catalog No. A190-105A Uniprot ID P01106

Lot No. 240718 GenelD 4609

APPLICATIONS WB, IP, ICC, ELISA

AMOUNT 0.1 ml

CONCENTRATION 1 mg/ml

STORAGE/SHELF LIFE 2 – 8°C / 1 year from date of receipt

PHYSICAL STATE Liquid

BUFFER Phosphate Buffered Saline (PBS) containing 0.09% Sodium Azide

ISOTYPE IgG

ORIGIN USA

PRODUCTION PROCEDURES Rabbits were immunized with a synthetic peptide representing amino acid residues 410–419 (EQKLISEEDL) of human myc conjugated to KLH. Antibody was isolated by affinity chromatography using the peptide immobilized on solid support.

Immunoglobulin concentration was determined using Beer's Law where 1 mg/mL IgG has an A280 of 1.4.

APPLICATIONS Centrifuge tube to remove product from lid. Optimal working dilutions should be determined experimentally by the investigator. Prepare working dilution immediately before use.

Western Blot 1:1000 – 1:30,000

Immunoprecipitation 1 – 4 µg/mg lysate

Immunocytochemistry 1:100 – 1:400

ELISA 1:1000 – 1:30,000; for coating plates 1:100 – 1:500

APPLICATION NOTES All western blot analysis is performed using 5% Milk-TBST for blocking and as antibody diluent. Primary antibody is incubated overnight.

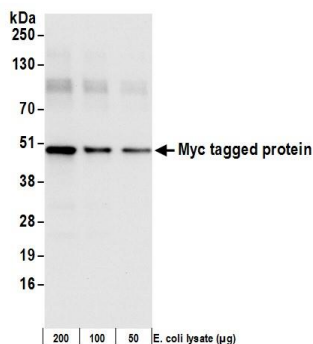
Western blots of cell lysates are performed using Goat anti-Rabbit IgG Heavy and Light Chain Antibody (A120-101P).

Western blots of immunoprecipitates are performed using Goat anti-Rabbit Light Chain HRP Conjugate (A120-113P) with 5% Normal Pig Serum (S100-020) added to the blocking buffer.

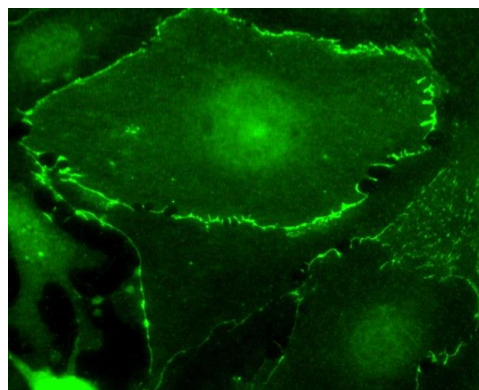
ADDITIONAL INFO <https://www.fortislife.com/p/A190-105A>

Use the link above to view SDS, a current list of citations, and other product specific information.

This document certifies that this product has met all of the quality control standards defined by Bethyl Laboratories, Inc.
Michael Spencer, PhD Date: July 18, 2024

**Detection of c-myc-tagged protein by western blot.**

Samples: 200, 100, or 50 ng of E. coli whole cell lysate expressing a multi-tag fusion protein. **Antibody:** Affinity purified rabbit anti-Myc Tag antibody A190-105A used for WB at 0.04 µg/ml (1:25,000). **Detection:** Chemiluminescence with an exposure time of 3 seconds.

**Detection of c-myc-tagged Plakoglobin by immunofluorescence.**

Samples: Human microvascular endothelial cells expressing c-myc tagged plakoglobin following transient transfection. **Antibody:** Affinity purified rabbit anti-Myc Tag (Cat. No. A190-105A) used at 1 µg/ml. **Detection:** FITC labeled goat anti-rabbit IgG (h+l).