

Rabbit IgG Heavy and Light Chain Highly Cross-Adsorbed Antibody

Goat Polyclonal Conjugate HRP

Antigen Affinity Purified

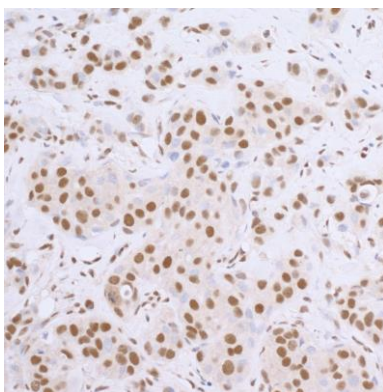
Catalog No. A120-501P

Lot No. 37

APPLICATIONS	IHC, ICC
SPECIES REACTIVITY	Rabbit. Minimum reactivity to human and mouse
AMOUNT	1 ml
CONCENTRATION	1 mg/ml
STORAGE/SHELF LIFE	2 – 8°C / 1 year from date of receipt
PHYSICAL STATE	Liquid
BUFFER	Phosphate Buffered Saline (PBS) containing 0.2% BSA and 0.05% Pro-Clean 400
ISOTYPE	IgG
ORIGIN	USA
PRODUCTION PROCEDURES	<p>Antiserum was cross adsorbed using human and mouse immunosorbents to remove cross reactive antibodies. The antibody to rabbit IgG was isolated by affinity chromatography using antigen coupled to agarose beads and conjugated to horseradish peroxidase (HRP).</p> <p>Immunoglobulin concentration was determined using Beer's Law where 1 mg/mL IgG has an A280 of 1.4.</p> <p>Eliminate the streptavidin-HRP step required when using biotinylated secondary antibodies. Incubate samples with the Rabbit IgG-heavy and light chain highly cross-adsorbed IHC Antibody for the length of time used with biotinylated secondary antibodies and proceed directly to visualizing with DAB or other HRP substrate.</p> <p>The Rabbit IgG-heavy and light chain highly cross-adsorbed IHC Antibody improves immunohistochemical applications by reducing the processing time relative to other widely used detection systems. The use of the anti-Rabbit IHC Antibody results in sensitivity and specificity comparable to or better than the commonly used biotin-streptavidin or biotin-avidin detection systems.</p> <p>Non-specific binding to human and mouse tissue is negligible.</p>
APPLICATIONS	<p>Centrifuge tube to remove product from lid. Optimal working dilutions should be determined experimentally by the investigator. Prepare working dilution immediately before use.</p> <p>Immunohistochemistry 1:50 – 1:500</p> <p>Immunocytochemistry 1:50 – 1:500</p>
APPLICATION NOTES	<p>For use with Formalin-Fixed Paraffin-Embedded tissues, frozen sections and cells.</p> <p>IHC validation was performed using Immunohistochemistry Accessory Kit (Cat. # IHC-101). A120-501P was substituted for IHC-101d.</p>
ADDITIONAL INFO	<p>https://www.fortislife.com/p/A120-501P</p> <p>Use the link above to view SDS, a current list of citations, and other product specific information.</p>

This document certifies that this product has met all of the quality control standards defined by Bethyl Laboratories, Inc.
Michael Spencer, PhD Date: July 2, 2025

Rabbit IgG Heavy and Light Chain Highly Cross-Adsorbed Antibody A120-501P



Detection of human Sp1 by immunoperoxidase. *Sample:* FFPE section of human breast carcinoma. *Primary Antibody:* Rabbit anti-Sp1 (A300-134A) used at a dilution of 1:5,000. *Secondary Antibody:* goat anti-rabbit IgG-heavy and light chain, highly cross adsorbed Antibody HRP Conjugated (A120-501P) used at a dilution of 1:100 (10 µg/ml). *Detection:* DAB